



FireArrow Photo Viewer Installation Guide

Version 1.0.1



Notice

This document is a proprietary product of FireArrow and is protected by copyright laws and international treaty. Information in this manual is subject to change without notice and does not represent a commitment on the part of FireArrow. While reasonable efforts have been made to ensure the accuracy of the information contained herein, FireArrow assumes no liability for errors or omissions. No liability is assumed for direct, incidental, or consequential damages resulting from the use of the information contained in this document.

The copyrighted software that accompanies this document is licensed to the End User for use only in strict accordance with the End User License Agreement, which the Licensee should read carefully before commencing use of the software. No part of this publication may be reproduced, transmitted, stored in a retrieval system, nor translated into any human or computer language, in any form or by any means, electronic, mechanical, magnetic, optical, chemical, manual or otherwise, without the prior written permission of the copyright owner. This document may use fictitious names for purposes of demonstration; references to be actual persons, companies, or organizations are strictly coincidental.

Table of Contents

Installation Prerequisites.....	3
Installation Procedure	3
License Manager Installation	3
Product Activation Tool Installation	8
Photo Viewer Web Part Installation.....	11
Post-Installation Tasks.....	17
Un-installation.....	19
License Management	19
License Activation	20
Technical Support	23

Installation Prerequisites

System Requirements :

Microsoft Windows SharePoint Service 3.0, Microsoft Office SharePoint Server 2007, SharePoint 2010 Foundation or SharePoint 2010 Server

Supported Browser:





- Internet Explorer 6, 7, 8
- FireFox 2.0+
- Safari 2.0+

Language Support:

- English

Installation Procedure

The Photo Viewer installation package contains the installation files for the following two components: License Manager Installation, Photo Viewer web part installation and Product Activation Tool Installation.

 FireArrow.License.1.0.0.0	File Folder
 PhotoViewer.1.0.1.5	File Folder
 ProductActivation.1.0.5	File Folder
 Photo_Viewer_ManualV1.pdf	2,806 KB Adobe Acrobat Doc...

Please follow below orders to install these components to your SharePoint site:

1. Install FireArrow License Manager. (*)
2. Install FireArrow Product Activation Tool. (Optional)
3. Install FireArrow Photo Viewer.

Below sections will describe how to install each component in detail.

License Manager Installation

The License Manager is only required to install once on a farm. If you have already installed it with other FireArrow products before, you can skip license manager installation section but need to ensure it is deployed globally. To verify the installation and deployment, follow below steps:

1. Log into the SharePoint Central Administration. Go to the “System Settings” and select “Manage farm Solutions” under the “Farm Management” section.



Farm Management

[Configure alternate access mappings](#) | [Manage farm features](#) |

[Manage farm solutions](#) | [Manage user solutions](#) |

[Configure privacy options](#) | [Configure cross-firewall access zone](#)

[Deploy or retract solution packages across the farm](#)

2. Check if “firearrow.sharepoint.license.wsp” is in the solution list or not. If it is, it means License Manager has been already installed. If not, please follow the next section to install the License Manager.

firearrow.sharepoint.advancedrssviewer.wsp	Deployed	http://sp2010test.env.firearrowsoft.com/
firearrow.sharepoint.license.wsp	Deployed	Globally deployed.
firearrow.sharepoint.livebanner.wsp	Deployed	http://sp2010test.env.firearrowsoft.com/

Note: During the installation process, the license manager solution is deployed globally.

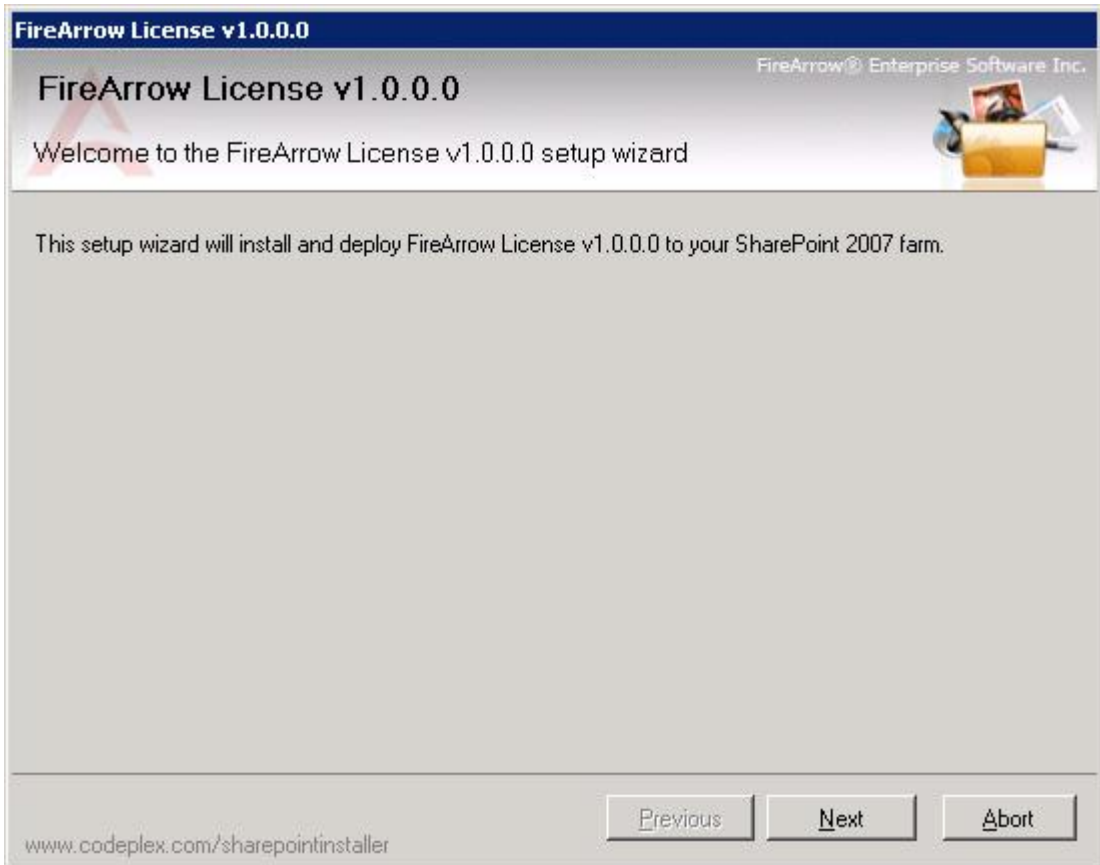
License Manager Installation Steps:

The steps to install the License Manager are as followed. You must be the ***SharePoint Farm Administrator*** for a successful installation.

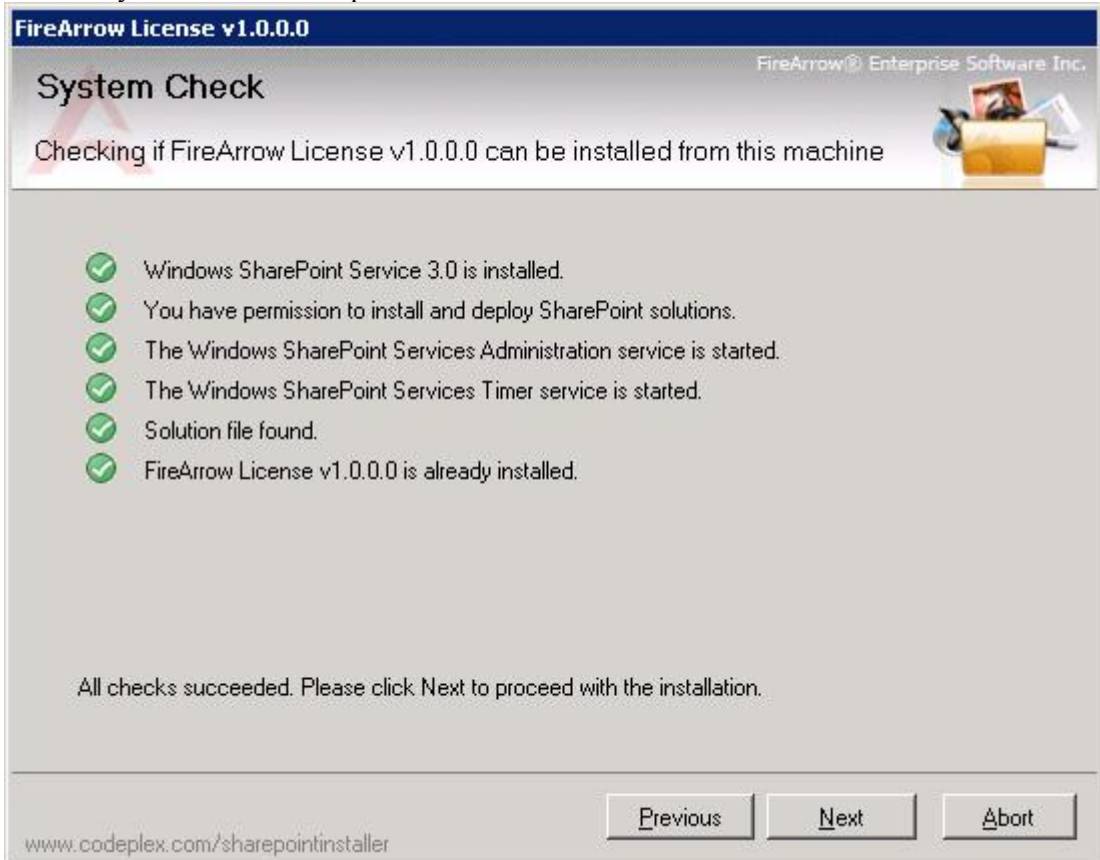
1. Open the folder for the License Manager Installation and run “Setup.exe”.

Name	Date modified	Type	Size
banner	4/18/2010 5:08 PM	JPEG image	17 KB
EULA	7/13/2009 9:36 AM	Rich Text Format	10 KB
FireArrow.SharePoint.License	8/25/2010 2:41 PM	WSP File	33 KB
Setup	4/1/2010 3:18 AM	Application	387 KB
Setup.exe	8/15/2010 11:54 PM	CONFIG File	1 KB

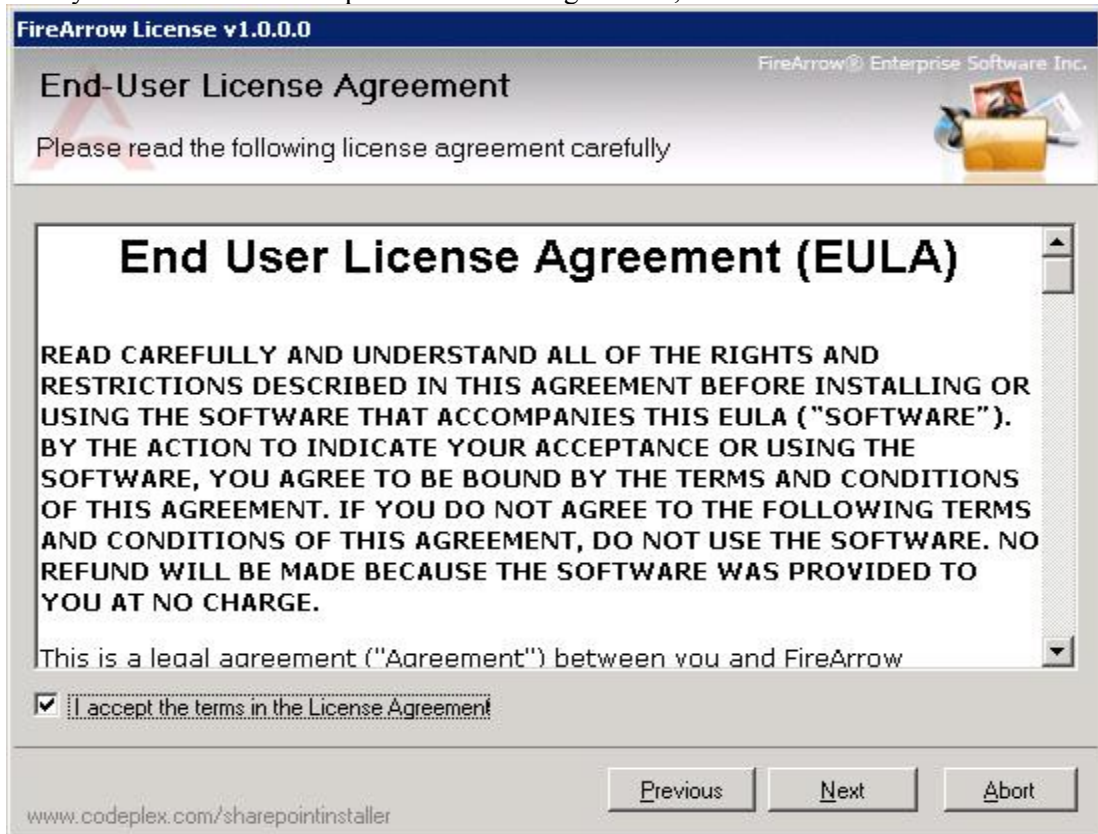
2. The setup wizard will be displayed. Click “Next” to proceed.



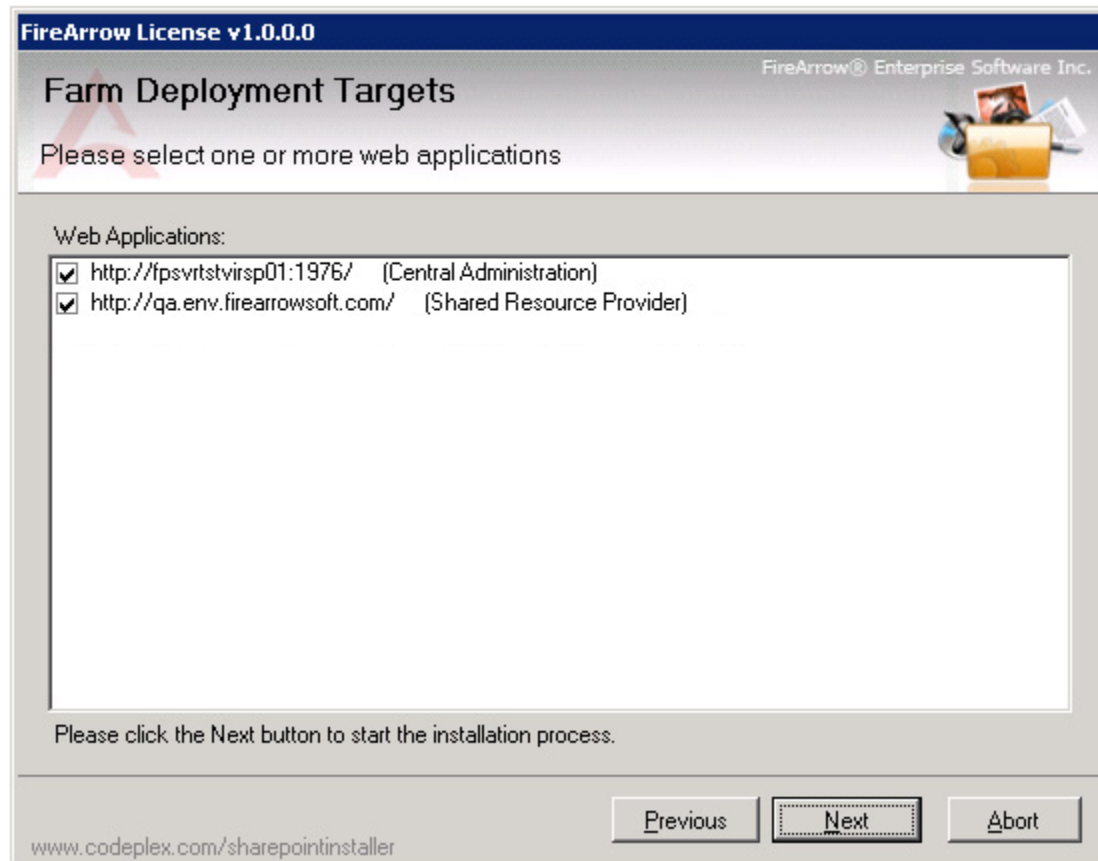
3. Wait for system check to complete and then click “Next”.



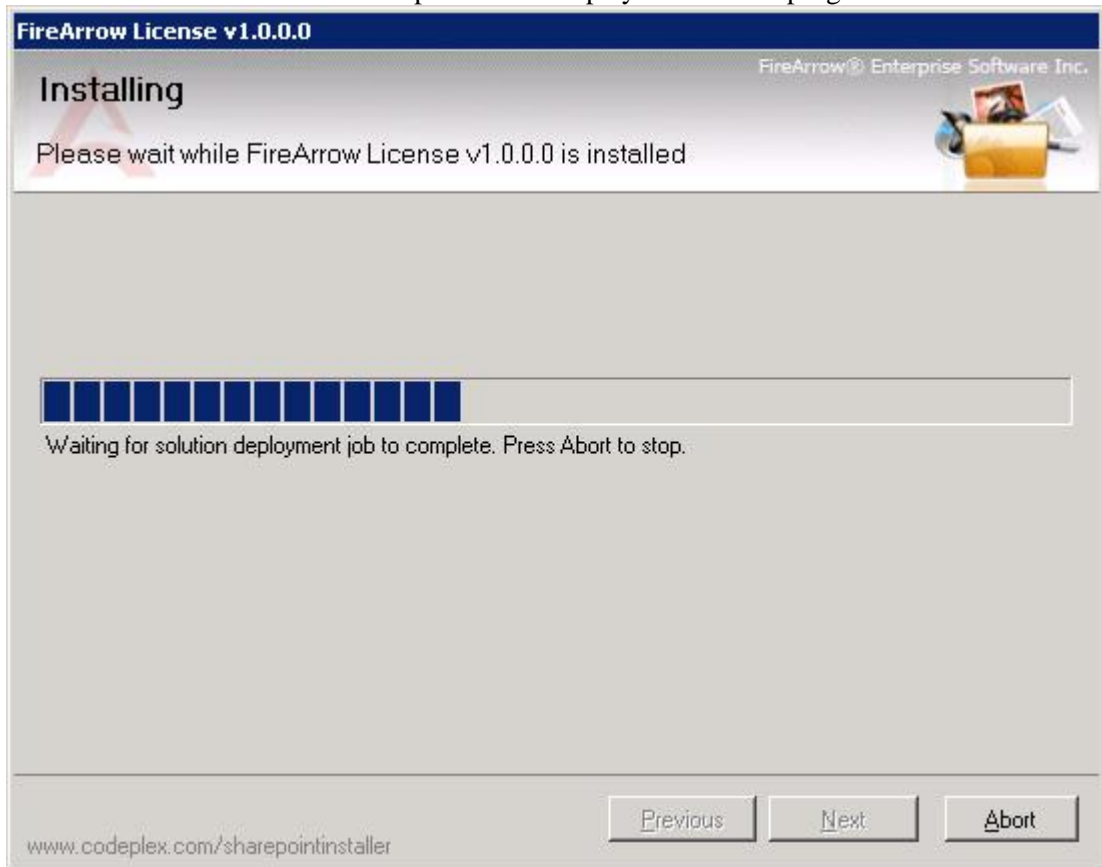
4. After you have read and accepted the License Agreement, click “Next” to continue.



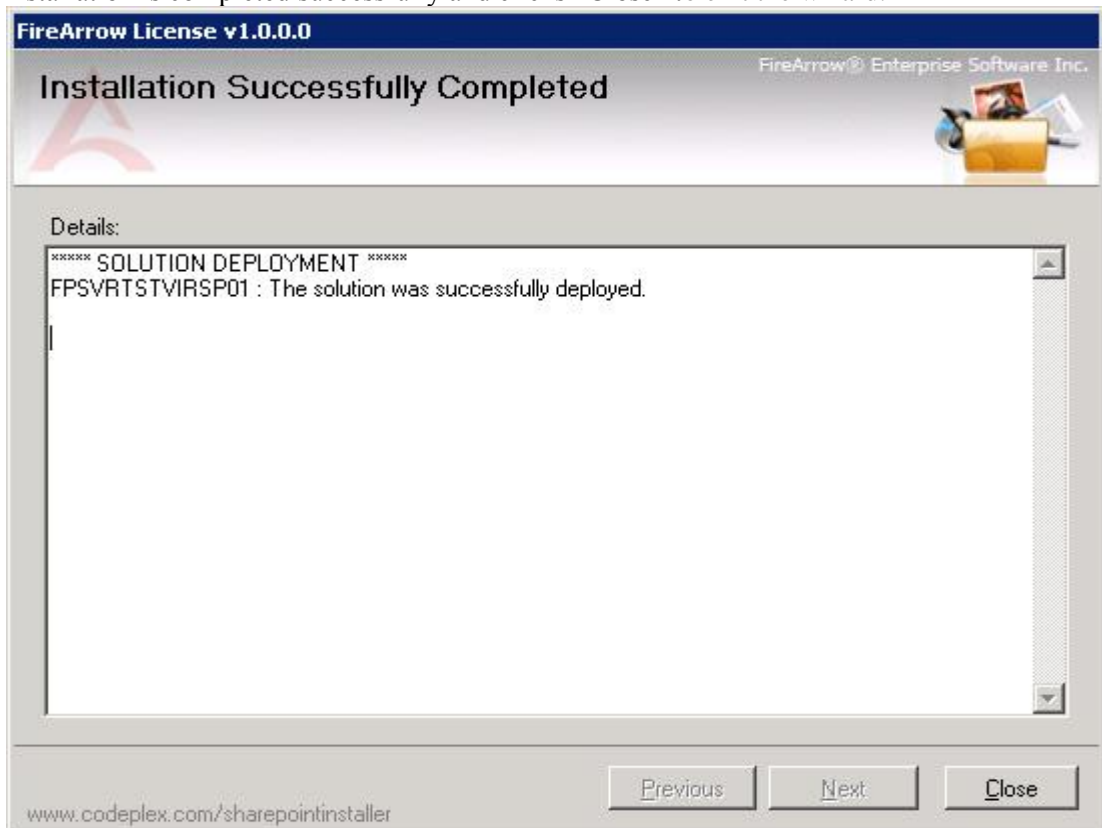
5. Click "Next" to continue. All the available web applications on the server are selected by default.



- The wizard starts to install the component and displays the overall progress.







- Installation is completed successfully and clicks "Close" to exit the wizard.



Product Activation Tool Installation

The Product Activation Tool will be used to activate FireArrow products. Just like the License Manager, it is also only required to install once on a server.

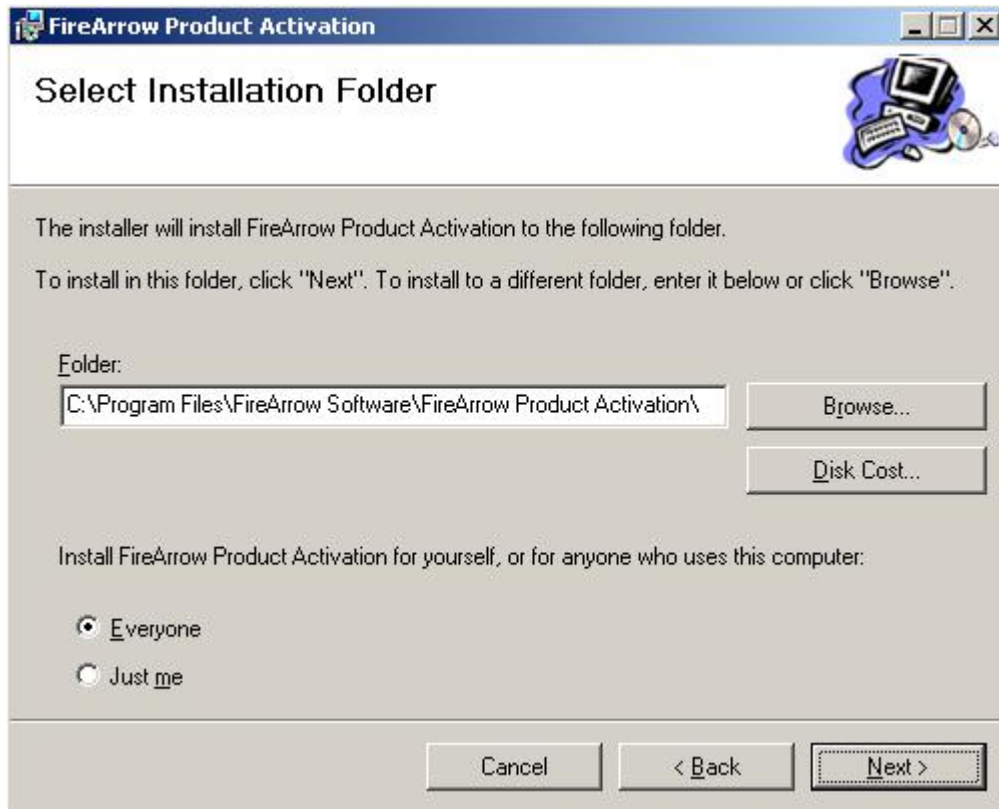
- Open the folder for Product Activation installation and run “Setup.exe”.

Name	Date modified	Type	Size
 FireArrow.ProductActionvation.Installer	8/25/2010 4:05 PM	Windows Installer ...	537 KB
 FireArrow.ProductActivation	8/25/2010 4:05 PM	Application	184 KB
 FireArrow.ProductActivation.RunAs	8/25/2010 4:05 PM	Application	76 KB
 setup	8/25/2010 4:05 PM	Application	421 KB

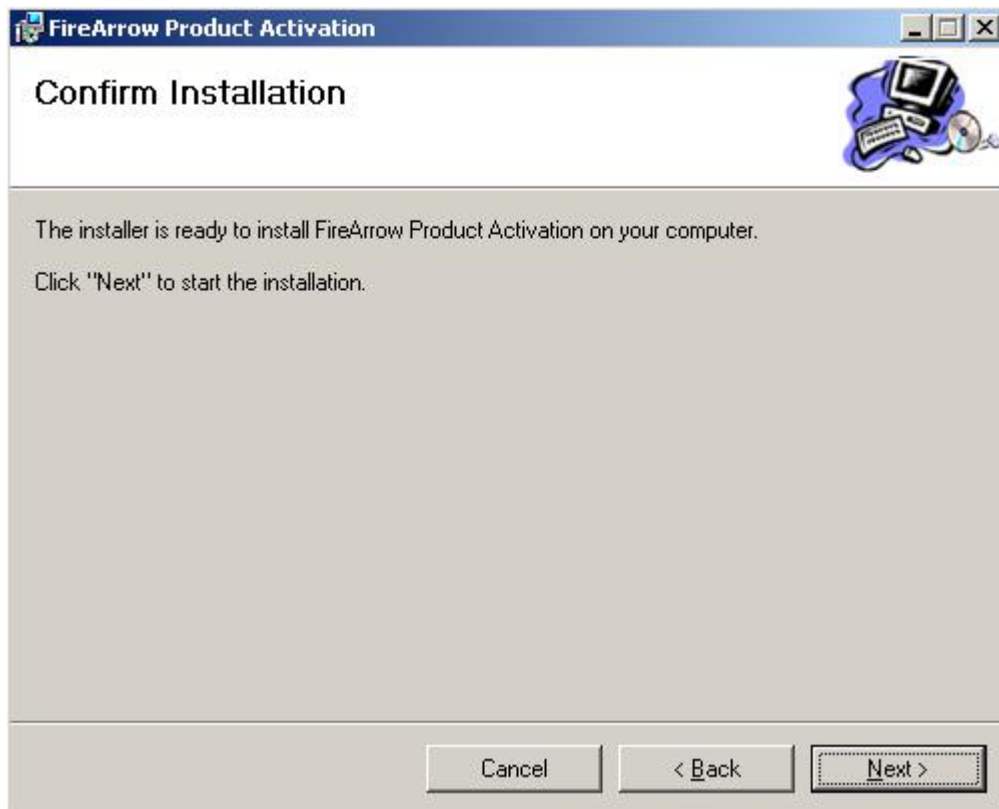
- The setup wizard will be displayed and click “Next” to proceed.



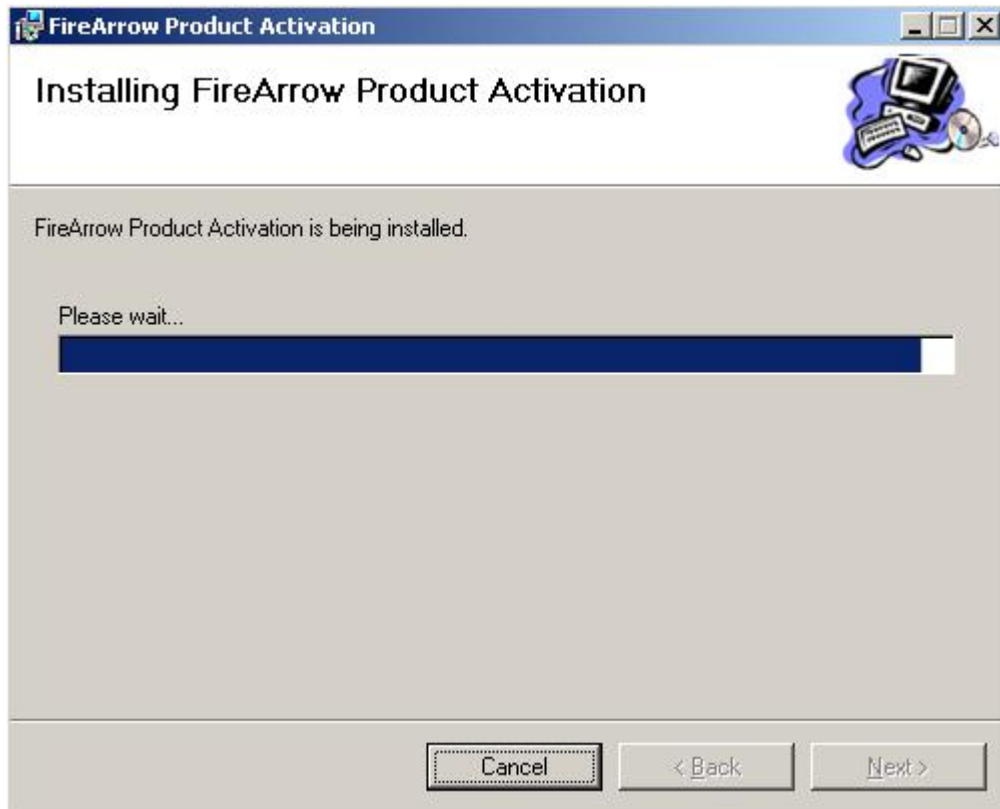
- Select the installation folder, and click ‘Next’.



- Click 'Next' to confirm the installation.



- The wizard starts the installation and display the installation progress.



- Installation is completed successfully and clicks "Close" to exit the wizard.

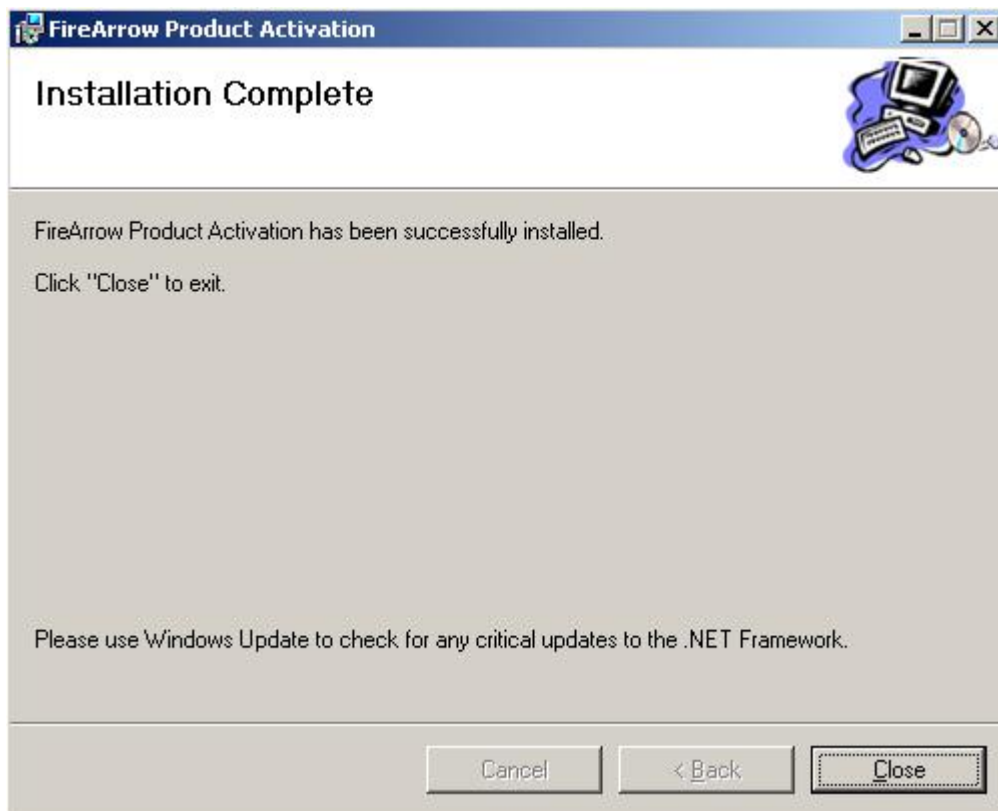


Photo Viewer Web Part Installation

We provide two installation approaches for Photo Viewer web part installation. One is to use the installation wizard for automatic installation. The other way is to use STSADM command tool for manual installation. This section describes both approaches in detail.

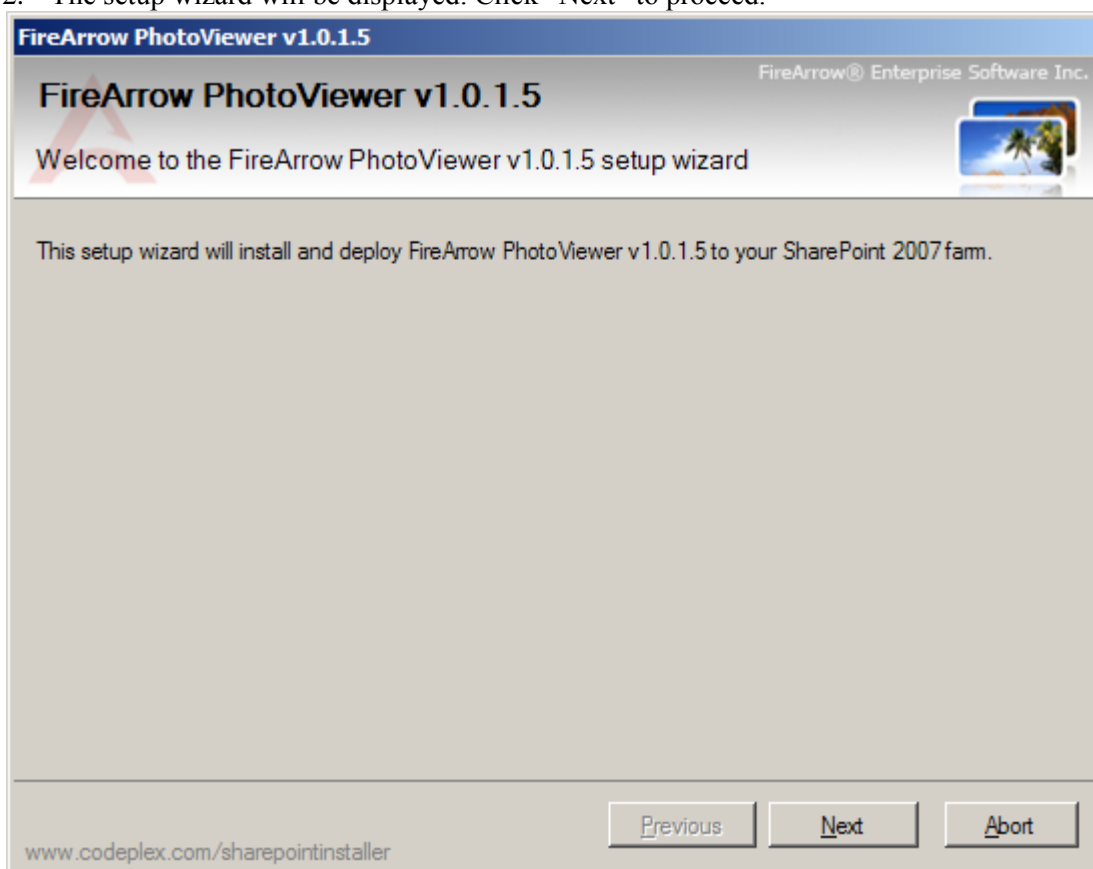
Automatic Installation Approach

The Photo Viewer installation package contains the installer file, solution package file, image, and etc. You must be the SharePoint Farm Administrator for a successful installation. Please follow the following steps for installation.

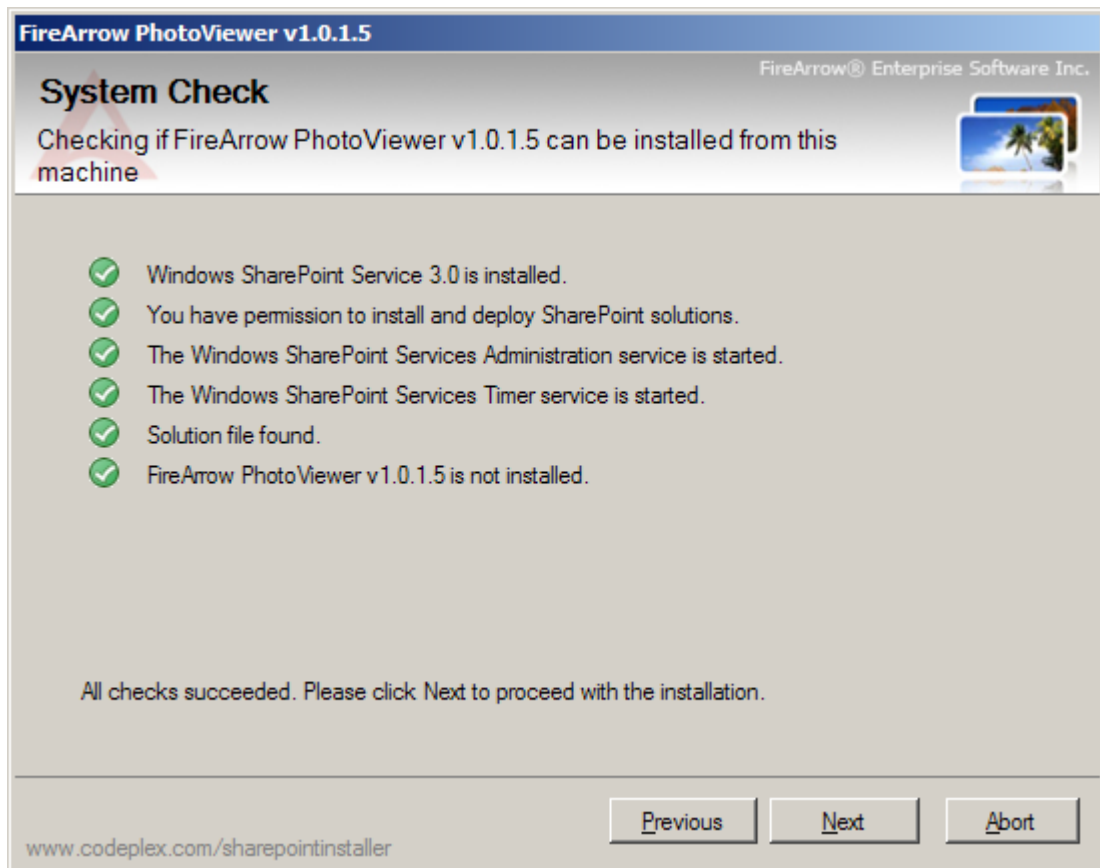
1. Open the folder for PhotoViewer installation and double click the “Setup.exe” to start the installation.

Name	Size	Type
banner.jpg	17 KB	JPEG Image
EULA.rtf	10 KB	Rich Text Document
FireArrow.SharePoint.PhotoViewer.wsp	225 KB	WSP File
Setup.exe	387 KB	Application
Setup.exe.config	1 KB	XML Configuration File

2. The setup wizard will be displayed. Click “Next” to proceed.



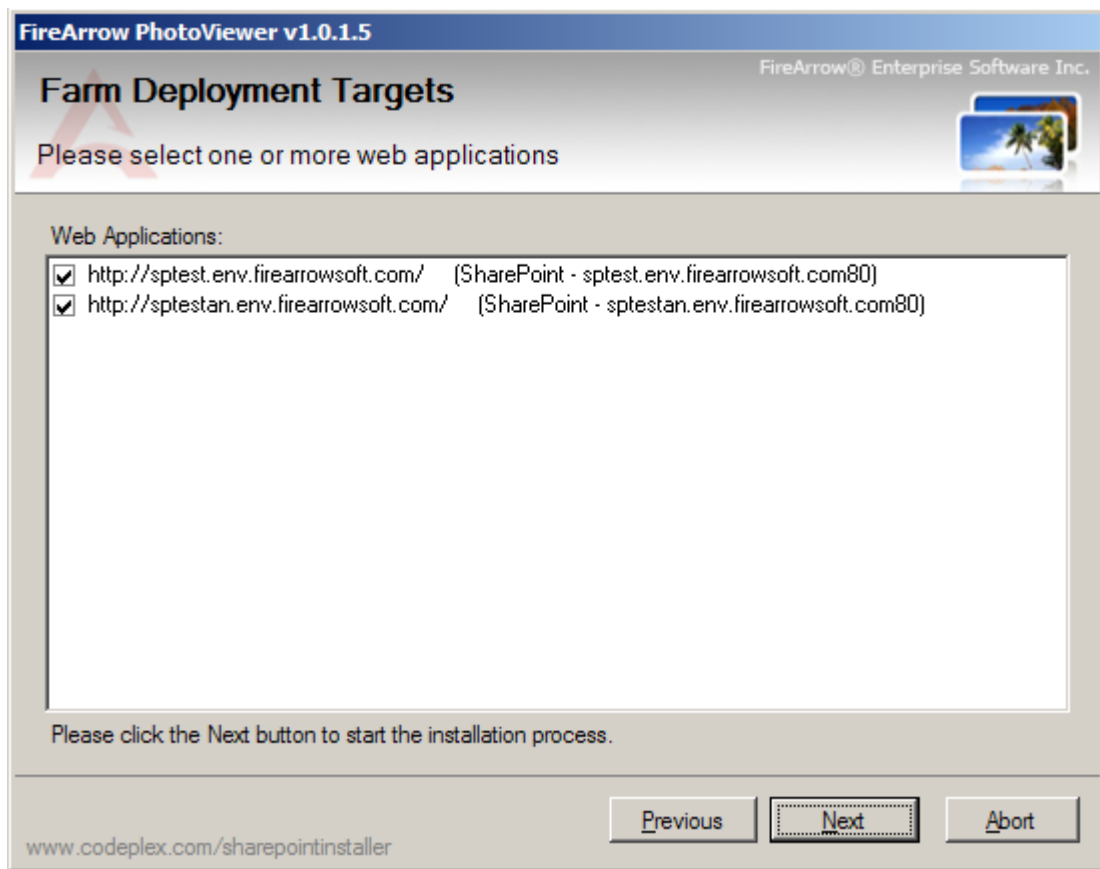
3. Wait for system check to complete and then click “Next”.



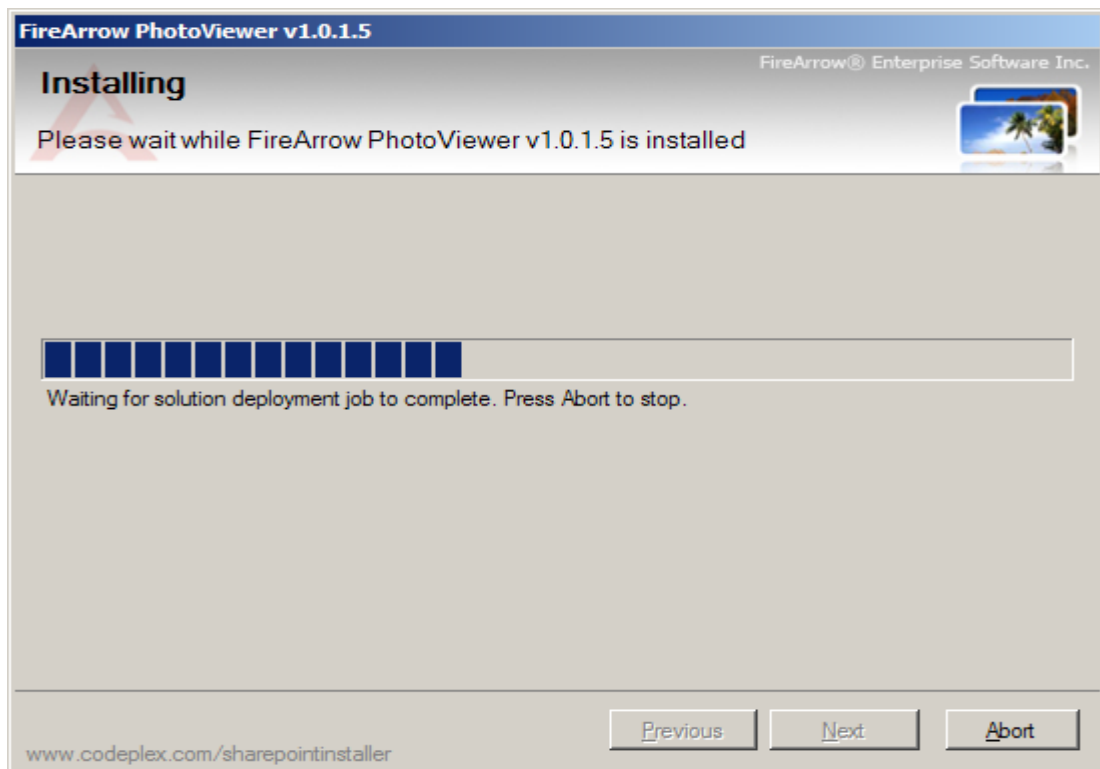
4. After you have read and accepted the License Agreement, click “Next” to continue.



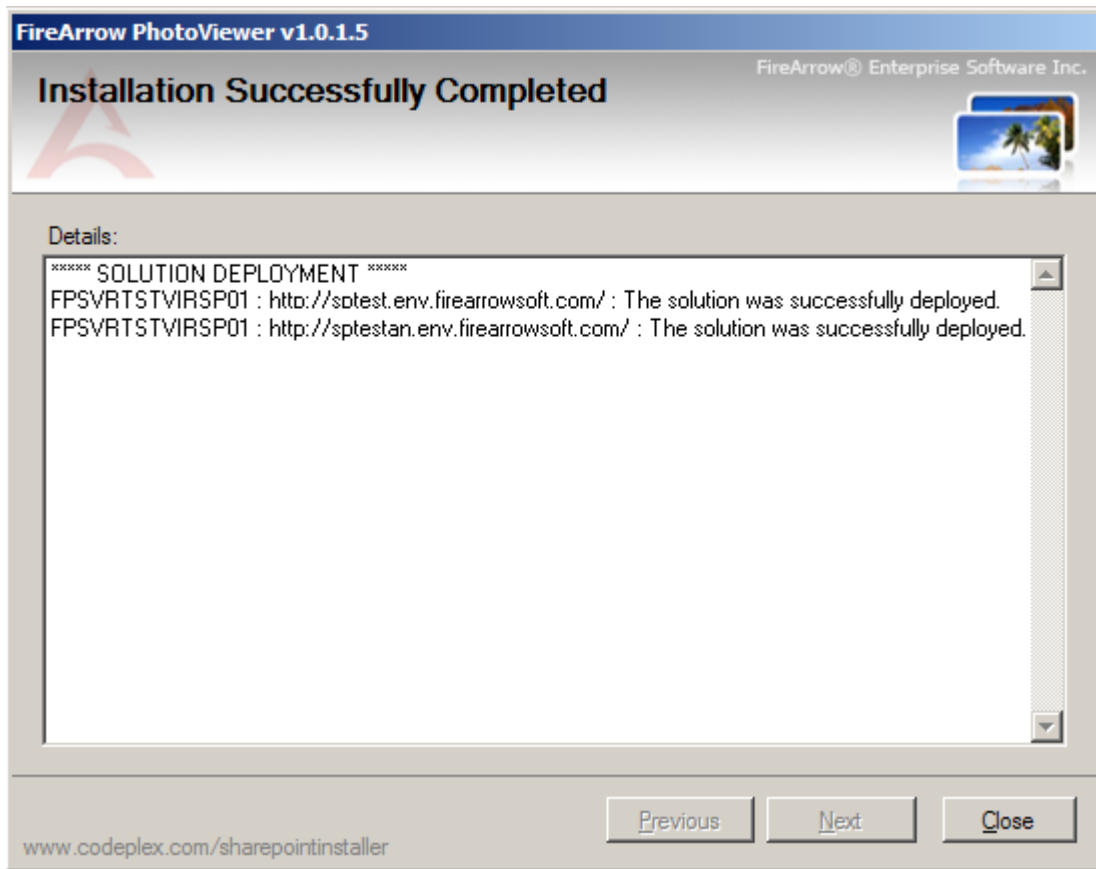
5. Select one or more target web applications and then click "Next".



6. The wizard starts installing and display the installation progress.



7. Installation is completed successfully and clicks “Close” to exit the wizard.



Manual Installation Approach

The folder for PhotoViewer installation contains the solution package which you need for manual installation.

Name	Size	Type
banner.jpg	17 KB	JPEG Image
EULA.rtf	10 KB	Rich Text Document
FireArrow.SharePoint.PhotoViewer.wsp	701 KB	WSP File
Setup.exe	387 KB	Application
Setup.exe.config	1 KB	XML Configuration File

The steps for manual installation are as followed:

1. Copy the solution package to the server farm and run following commands to add solutions to the server farm:
`stsadm.exe -o addsolution -filename "FireArrow.SharePoint.PhotoViewer.wsp"`
`stsadm -o execadmsvcjobs`
2. Then you need to deploy the solution package. You can deploy the solution package either by running STSADM commands or using the SharePoint Central Administration

web interface.

Option 1: STSADM commands

You need to run the following two commands for solution deployment:

- 1) stsadm -o deploysolution -name "FireArrow.SharePoint.PhotoViewer.wsp" -immediate -url *http://qa.test.FireArrowsoft.com* -force -allowCasPolicies
Note: replace the url (*http://qa.test.firearrowsoft.com*) with your target web application's url.
- 2) stsadm -o execadmsvcjobs

Option 2: SharePoint Central Administration

- 1) Open Central Administration, select Operations, and select Solution management under the Global Configuration.

Global Configuration

- [Timer job status](#)
- [Timer job definitions](#)
- [Master site directory settings](#)
- [Site directory links scan](#)
- [Alternate access mappings](#)
- [Manage farm features](#)
- [Quiesce farm](#)
- [Solution management](#)

- 2) Select the solution "FireArrow.SharePoint.PhotoViewer.wsp", and then select Deploy Solution from the Solution Properties.

Central Administration > Operations > Solution Management

Solution Management

This page has a list of the Solutions in the farm.

Name	Status	Deployed To
firearrow.sharepoint.livebanner.wsp	Deployed	http://sptest.env.firearrowsoft.com/
firearrow.sharepoint.photoviewer.wsp	Deployed	http://sptest.env.firearrowsoft.com/
firearrow.sharepoint.rssviewer.wsp	Deployed	http://sptest.env.firearrowsoft.com/
firearrow.sharepoint.stockquote.wsp	Deployed	http://sptest.env.firearrowsoft.com/
firearrow.sharepoint.weatherandclock.wsp	Deployed	http://sptest.env.firearrowsoft.com/

Solution Properties


Deploy Solution | Retract Solution | Back to Solutions

Name:	firearrow.sharepoint.photoviewer.wsp
Type:	Core Solution
Contains Web Application Resource:	Yes
Contains Global Assembly:	No
Contains Code Access Security Policy:	Yes
Deployment Server Type:	Front-end Web server
Deployment Status:	Deployed
Deployed To:	http://sptest.env.firearrowsoft.com/
Last Operation Result:	The solution was successfully deployed.
Last Operation Details:	FPSVRTSTVIRSP01 : http://sptest.env.firearrowsoft.com/ : The solution was successfully deployed.
Last Operation Time:	4/17/2010 8:47 AM

- Set the deployment job schedule and choose the target web application where the solution will be deployed.

Deploy Solution

Use this page to deploy the solution.

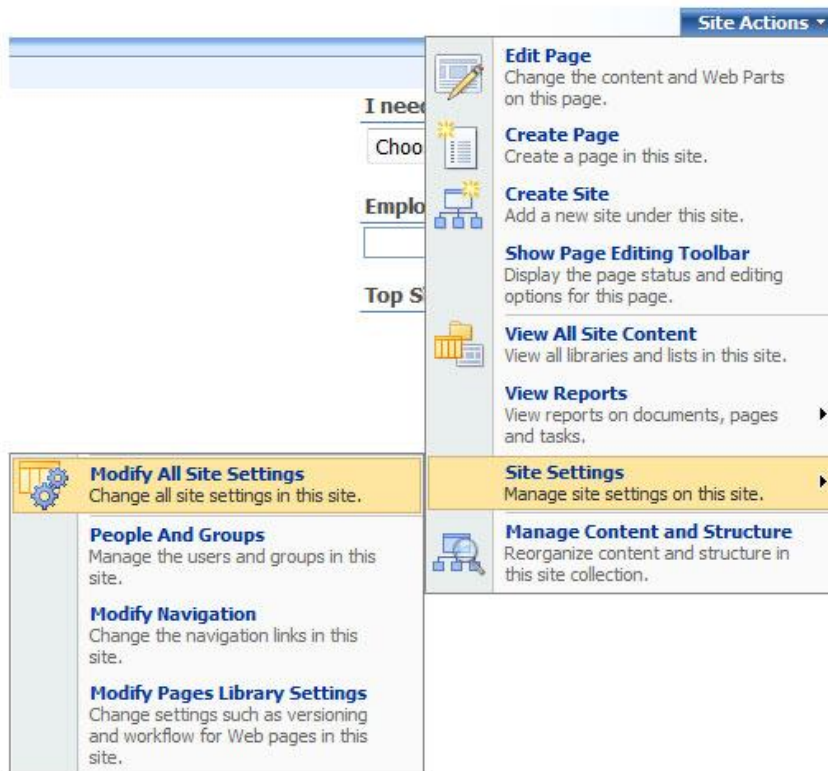
<p>Solution Information</p> <p>Information on the solution you have chosen to deploy.</p>	<p>Name: firearrow.sharepoint.photoviewer.wsp</p> <p>Locale: 0</p> <p>Deployed To: http://sptest.env.firearrowsoft.com/</p> <p>Deployment Status:</p>
<p>Deploy When?</p> <p>A timer job is created to deploy this solution. Please specify the time at which you want this solution to be deployed.</p>	<p>Choose when to deploy the solution:</p> <p><input checked="" type="radio"/> Now</p> <p><input type="radio"/> At a specified time:</p> <p>4/17/2010  3 PM <input type="text" value="00"/></p>
<p>Deploy To?</p> <p>The solution contains Web application scoped resources and should be deployed to specific Web applications. Please choose the Web application where you want the solution to be deployed.</p>	<p>Choose a Web application to deploy this solution:</p> <p>http://sharepointtrn/ <input type="text"/></p> <p>Warning: This solution contains a Code Access Security policy. Deploying this solution will change the effective trust policy. Do not proceed unless you trust the solution provider.</p>

After the solution is deployed to target web application, run the command “*iisreset /noforce*” to restart IIS.

Post-Installation Tasks

After installation, you need to perform the following steps to active the feature before the web part is ready to use.

1. Go to the Site Settings page: click “Site Actions”→ “Site Settings”→ “Modify All Site Settings” under MOSS screen.



2. Select “Site collection features”.







Site Collection Administration

- Search settings
- Search scopes
- Search keywords
- Recycle bin
- Site directory settings
- Site collection usage reports
- Site collection features
- Site hierarchy
- Portal site connection
- Site collection audit settings
- Audit log reports
- Site collection policies
- Site collection output cache
- Site collection cache profiles
- Site collection object cache
- Variations
- Variation labels
- Variation logs
- Translatable columns

3. Click “Active” Button to active FireArrow Photo Viewer Web Part.

QA With Anonymous Access > Site Settings > Site Features

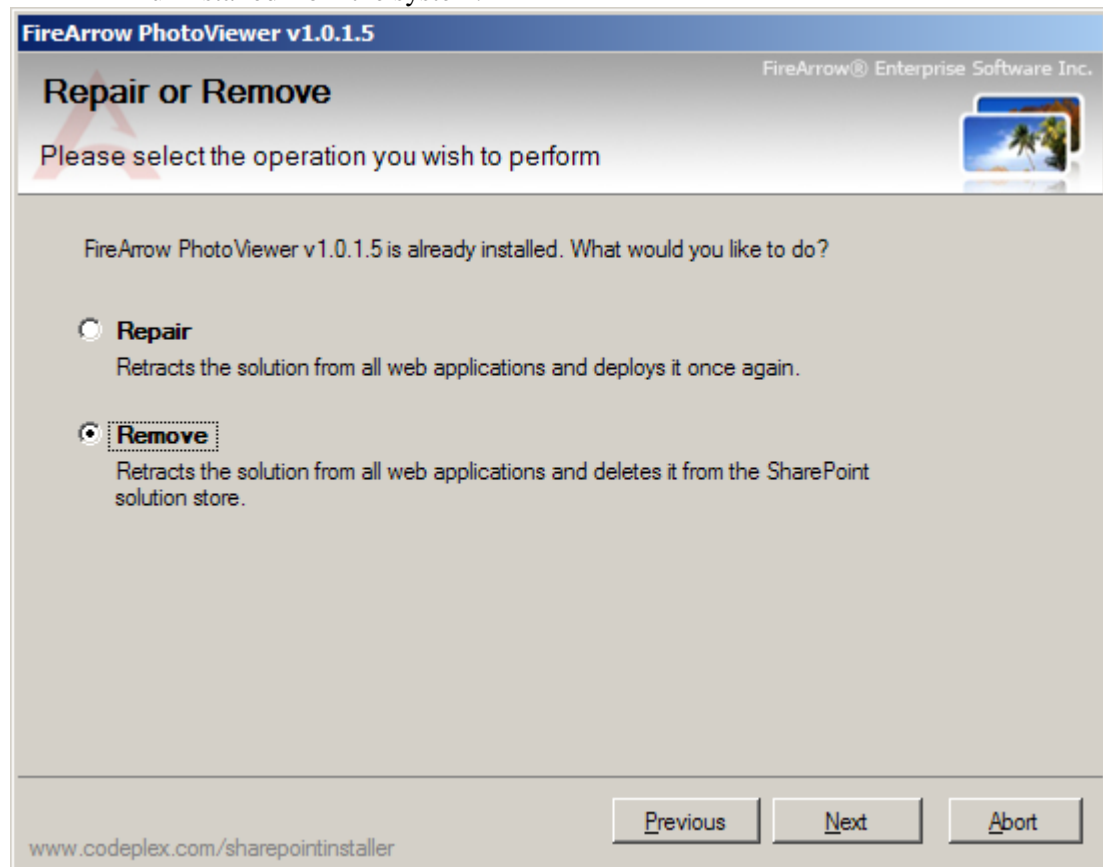
Site Collection Features

Name	Status
 Collect Signatures Workflow Gathers signatures needed to complete a Microsoft Office document.	<input type="button" value="Deactivate"/> <input checked="" type="button" value="Active"/>
 Disposition Approval Workflow Manages document expiration and retention by allowing participants to decide whether to retain or delete expired documents.	<input type="button" value="Deactivate"/> <input checked="" type="button" value="Active"/>
 FireArrow Live Banner Web Part Offers an effortless way to display and manage live banners in SharePoint Sites. It provides a lot of rich features, styles and controls to display image banners from SharePoint picture library.	<input type="button" value="Deactivate"/> <input checked="" type="button" value="Active"/>
 FireArrow Photo Viewer Web Part Provides elegant viewer styles, transition effects and features to display images from a SharePoint picture library.	<input type="button" value="Deactivate"/> <input checked="" type="button" value="Active"/>
 FireArrow Rss Viewer Web Part Allows users to configure and view RSS feeds on their Windows SharePoint Services 3.0 Platform (WSS 3.0)	<input type="button" value="Deactivate"/> <input checked="" type="button" value="Active"/>
 FireArrow Stock Quote Web Part Allows users to configure and display a stock watch list on your SharePoint portal.	<input type="button" value="Deactivate"/> <input checked="" type="button" value="Active"/>

Un-installation

You can use the installer to uninstall the Photo Viewer. The steps to uninstall it are as follows.

- 1) Run the setup.exe.
- 2) Select the “Remove” radio button and click “Next”, the solution will be uninstalled from the system.



License Management

The FireArrow Photo Viewer is allowed to use for 30-days after the installation without license activation. It is always recommended to provision your valid license activation key immediately after the installation is completed. Please go to the FireArrow web site (<http://www.firearrowsoft.com>) to purchase the software in order to obtain the license activation key.

After the software purchase, please email us (support@firearrowsoft.com) the following information in order to generate the product activation code:

1. Product key
2. Order confirmation #

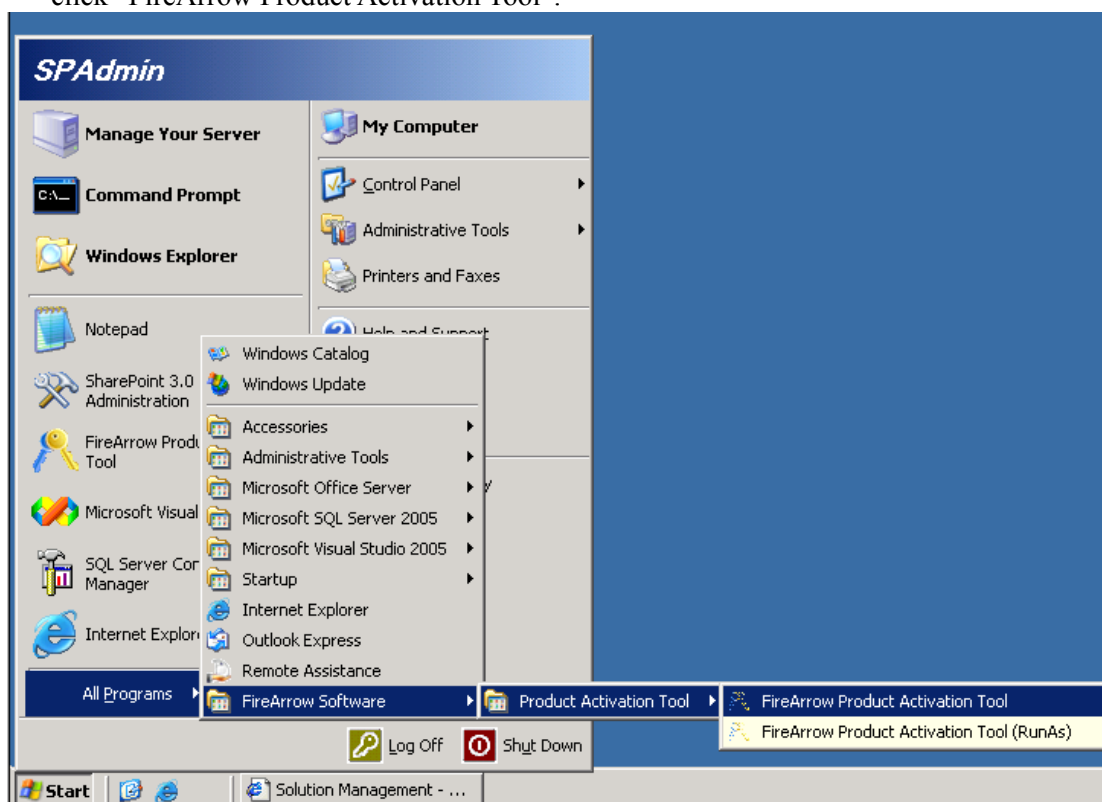
We will email you the product activation key.

You can obtain the product key information through the Product Activation Tool. Please follow the steps in below section to obtain the product key and complete the license activation.

License Activation

After the Product Activation Manager is successfully installed, follow below steps to obtain the product key information and activate the FireArrow product license in your server.

- Go to “Start” menu→All Programs→FireArrow Software→Product Activation Tool and click “FireArrow Product Activation Tool”.



- Select the ‘FireArrow Photo Viewer’ from the product dropdown list and the corresponding product information will be displayed in the form, including the “Product Key” information. You can also see the license status from the “Status” field. Before activation, the status will indicate you are using a trial version.



- Once you get the Activation Key, enter it into the 'Activation Key' field, and click 'Activate' button.



- Click OK in the pop-up window to confirm the activation. And you will notice that the message in the Status field is changed to "The product is activated". The product activation is completed.

FireArrow Product Activation Tool

FireArrow Product Activation

Logon as: FPSPTRN\SharePoint Is Farm Administrator

Select a product: FireArrow Photo Viewer Web Part

Description: Provides elegant viewer styles, transition effects and features to display images from a SharePoint picture library.

Version: 1.0.1.5

Select a edition: Standard

Select a license: Server

Select a server: FPSVR004

Product key: 11RPS-BRVRT-RSSJS-R00NE-VBNEV

Status: The product is activated. [Refresh](#)

Activation key: TSNSR-VVDS3JFPOV-CNSEE-QN5SR [Help](#)

Copyright © 2007-2010 FireArrow Enterprise Software Inc. All rights reserved.

Technical Support

Please feel free to contact our technical support team if you have any question or encounter any technical difficulty.

Technical Support: support@firearrowsoft.com

Please visit our web site (<http://www.firearrowsoft.com>) for any product update and answers to frequently asked questions.