



FireArrow Photo Viewer Installation and User Guide

Version 1.0.1



Notice

This document is a proprietary product of FireArrow and is protected by copyright laws and international treaty. Information in this manual is subject to change without notice and does not represent a commitment on the part of FireArrow. While reasonable efforts have been made to ensure the accuracy of the information contained herein, FireArrow assumes no liability for errors or omissions. No liability is assumed for direct, incidental, or consequential damages resulting from the use of the information contained in this document.

The copyrighted software that accompanies this document is licensed to the End User for use only in strict accordance with the End User License Agreement, which the Licensee should read carefully before commencing use of the software. No part of this publication may be reproduced, transmitted, stored in a retrieval system, nor translated into any human or computer language, in any form or by any means, electronic, mechanical, magnetic, optical, chemical, manual or otherwise, without the prior written permission of the copyright owner. This document may use fictitious names for purposes of demonstration; references to be actual persons, companies, or organizations are strictly coincidental.

Table of Contents

Chapter 1: Introduction	3
Chapter 2: Installation Guide	4
1. Installation Prerequisites	4
2. Installation Procedure	4
3. Post-Installation Tasks	18
4. Un-installation	19
5. License Management	20
Chapter 3: User & Administrative Guide.....	24
1. Interface Introduction	24
2. Web Part Setting Overview	25
3. Photo Viewer Display Styles	31
4. Transition Effects Guide.....	40
Chapter 4: Technical Support.....	51

Chapter 1: Introduction

FireArrow Photo Viewer Web Part allows users to browse or auto-display images from SharePoint library easily. It provides elegant display styles, rich transition effects and advanced features to display additional image information and add a relative link.

Key Feature List:

- ✓ Eight different photo viewer styles
- ✓ Configurable navigation
- ✓ Adjustable display size and alignment
- ✓ Cool image transition effects
- ✓ Set transition effect interval time
- ✓ Auto-play mode to display images automatically
- ✓ Set auto-play speed
- ✓ Set your own photo viewer title
- ✓ Display image properties/meta-data information
- ✓ Configurable associated hyperlink.

Release Notes:

The latest product release is version 1.0.1.5

About This Guide:

This guide covers the information you need to install and use the Photo Viewer web part. It walks you through the process of installing and activating the web part in your SharePoint environment. In addition, it describes the configuration options and features provided by the web part in detail.

Chapter 2: Installation Guide

1. Installation Prerequisites

System Requirements :

- Microsoft Windows SharePoint Service 3.0
- Microsoft Office SharePoint Server 2007

Supported Browser:





- Internet Explorer 6, 7, 8
- FireFox 2.0+
- Safari 2.0+

Language Support:

1. English

2. Installation Procedure

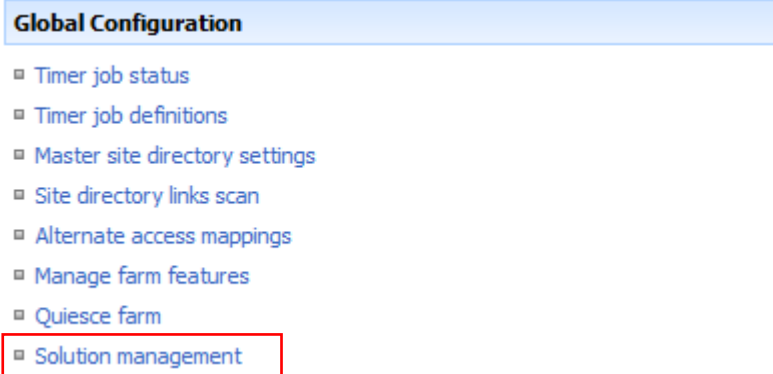
The Photo Viewer installation package contains the installation files for the following two components: License Manager Installation, Photo Viewer web part installation and Product Activation Tool Installation.

 FireArrow.License 1.0.0.0	File Folder
 PhotoViewer 1.0.1.5	File Folder
 ProductActivation 1.0.5	File Folder
 Photo_Viewer_ManualV1.pdf	2,806 KB Adobe Acrobat Doc...

License Manager Installation

The License Manager is only required to install once on a server. If you have already installed it with other FireArrow products before, you can skip the installation steps but need to ensure it is deployed globally. To verify the installation and deployment, follow below steps:

1. Log into the SharePoint Central Administration. Go to the Operations page and select “Solution management” under the Global Configuration.



2. Check if “firearrow.sharepoint.license.wsp” is in the solution list or not. If it is, it means License Manager has been already installed. If not, please skip to the next section to install the License Manager.

Central Administration > Operations > Solution Management

Solution Management

This page has a list of the Solutions in the farm.






Name	Status	Deployed To
firearrow.sharepoint.crosssitelookup.wsp	Deployed	http://qa.env.firearrowsoft.com/
firearrow.sharepoint.customchoice.wsp	Deployed	http://sptest.env.firearrowsoft.com/ ,...
firearrow.sharepoint.enhancepicture.wsp	Deployed	http://sptest.env.firearrowsoft.com/
firearrow.sharepoint.license.wsp	Deployed	Globally deployed.
firearrow.sharepoint.photoviewer.wsp	Deployed	http://sptest.env.firearrowsoft.com/ ,...
firearrow.sharepoint.progressbar.wsp	Deployed	http://sptest.env.firearrowsoft.com/ ,...
firearrow.sharepoint.ratingandreview.wsp	Deployed	http://sptest.env.firearrowsoft.com/ ,...
firearrow.sharepoint.rssviewer.wsp	Deployed	http://sptest.env.firearrowsoft.com/
firearrow.sharepoint.stockquote.wsp	Deployed	http://sptest.env.firearrowsoft.com/
firearrow.sharepoint.weatheranddock.wsp	Deployed	http://sptest.env.firearrowsoft.com/

Note: During the installation process, the license manager solution is deployed globally

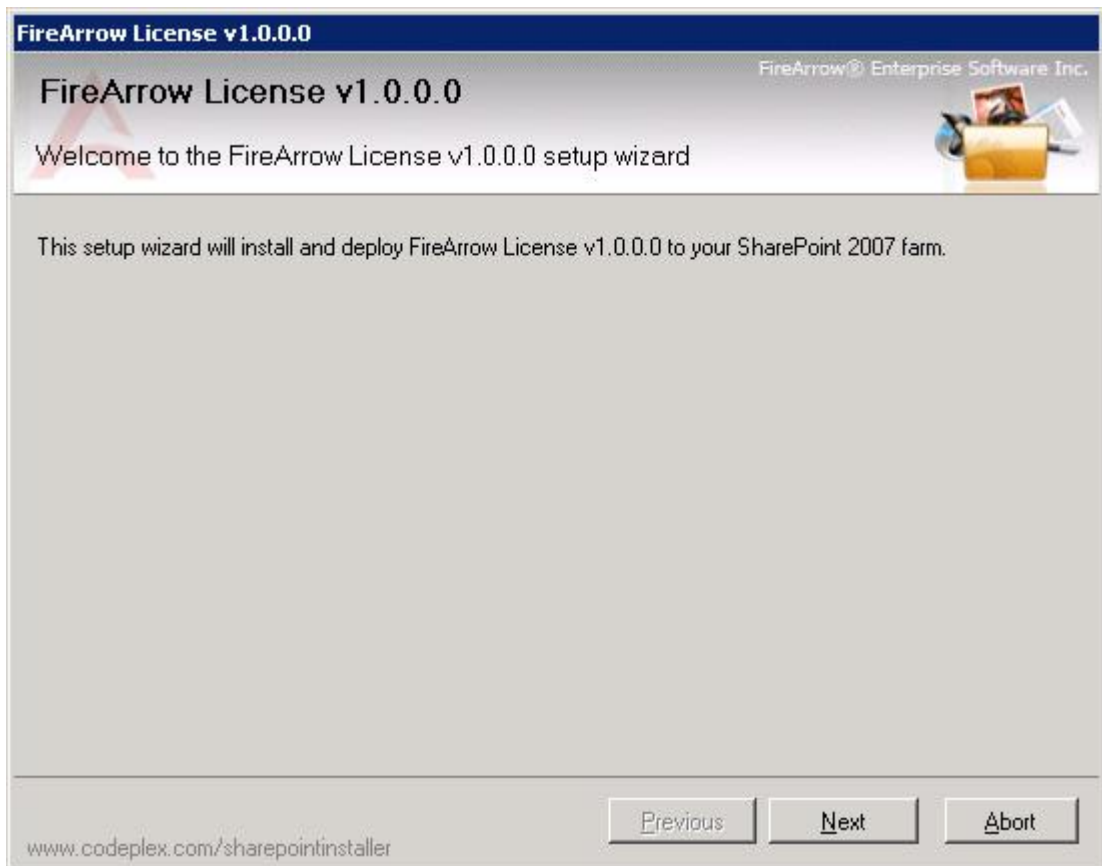
License Manager Installation Steps:

The steps to install the License Manager are as followed. You must be the SharePoint Farm Administrator for a successful installation.

1. Open the folder for License Manager Installation and run “Setup.exe”.

Name	Date modified	Type	Size
 banner	4/18/2010 5:08 PM	JPEG image	17 KB
 EULA	7/13/2009 9:36 AM	Rich Text Format	10 KB
 FireArrow.SharePoint.License	8/25/2010 2:41 PM	WSP File	33 KB
 Setup	4/1/2010 3:18 AM	Application	387 KB
 Setup.exe	8/15/2010 11:54 PM	CONFIG File	1 KB

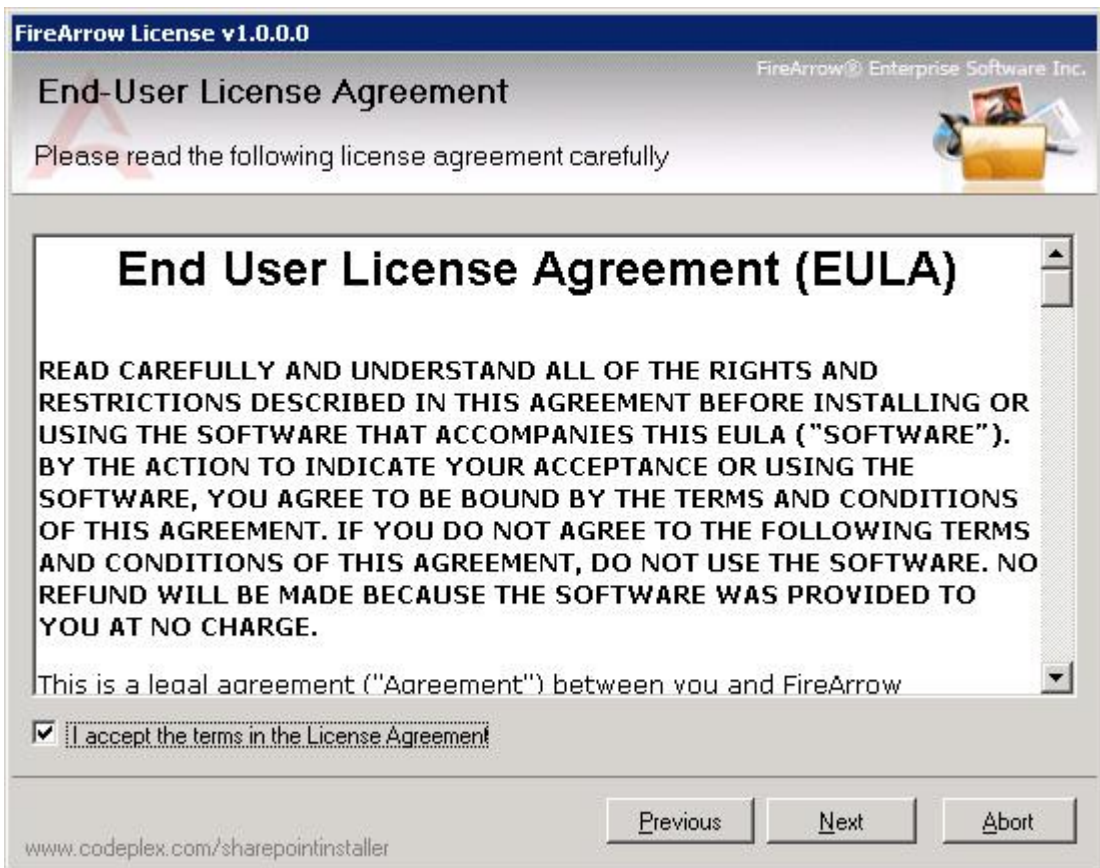
2. The setup wizard will be displayed. Click “Next” to proceed.



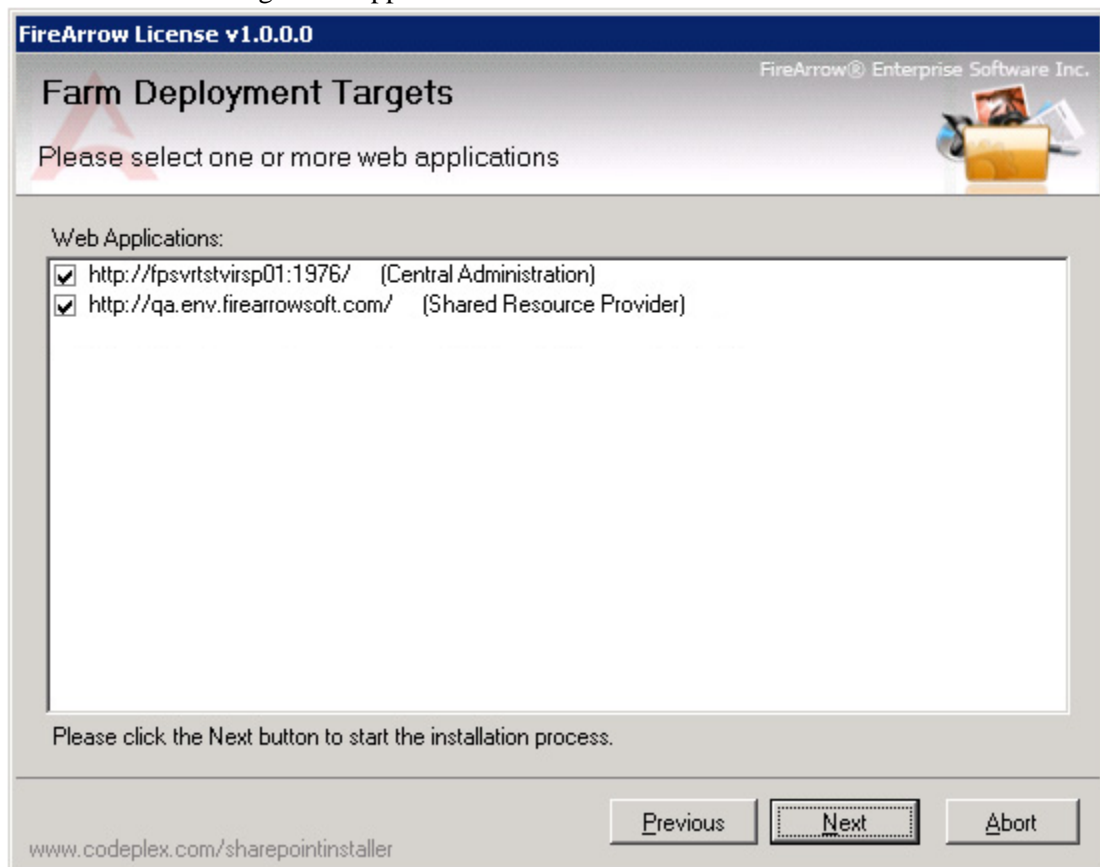
3. Wait for system check to complete and then click "Next".



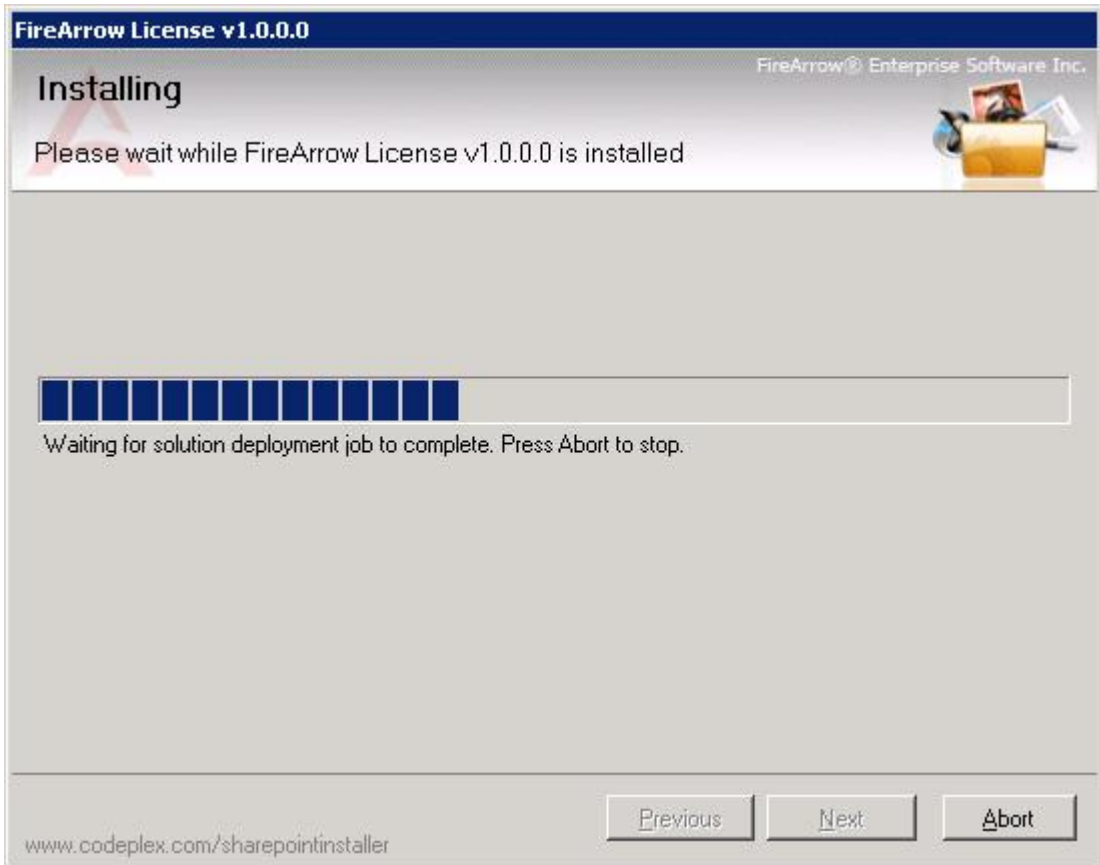
4. After you have read and accepted the License Agreement, click "Next" to continue.



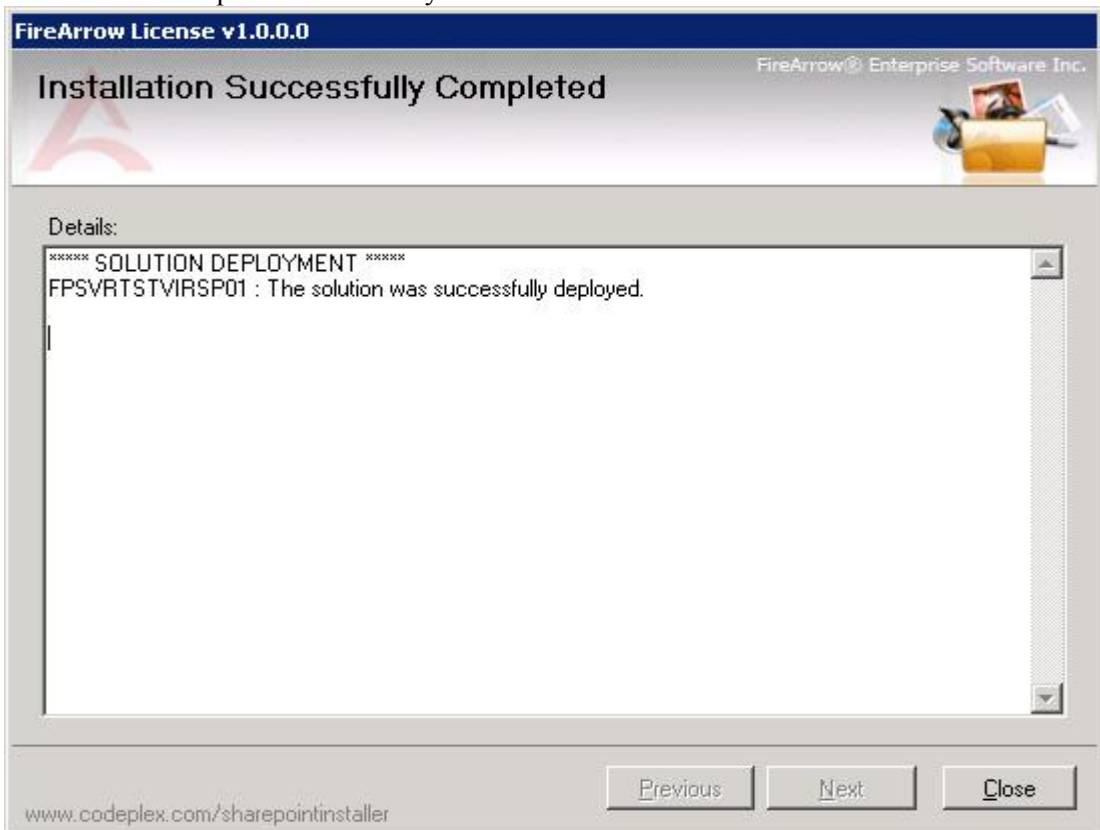
5. Select one or more target web applications and then click "Next".



6. The wizard starts installing and display the installation progress.







7. Installation is completed successfully and clicks “Close” to exit the wizard.



Product Activation Tool Installation

The Product Activation Tool will be used to active FireArrow products. Just like the License Manager, it is also only required to install once on a server.

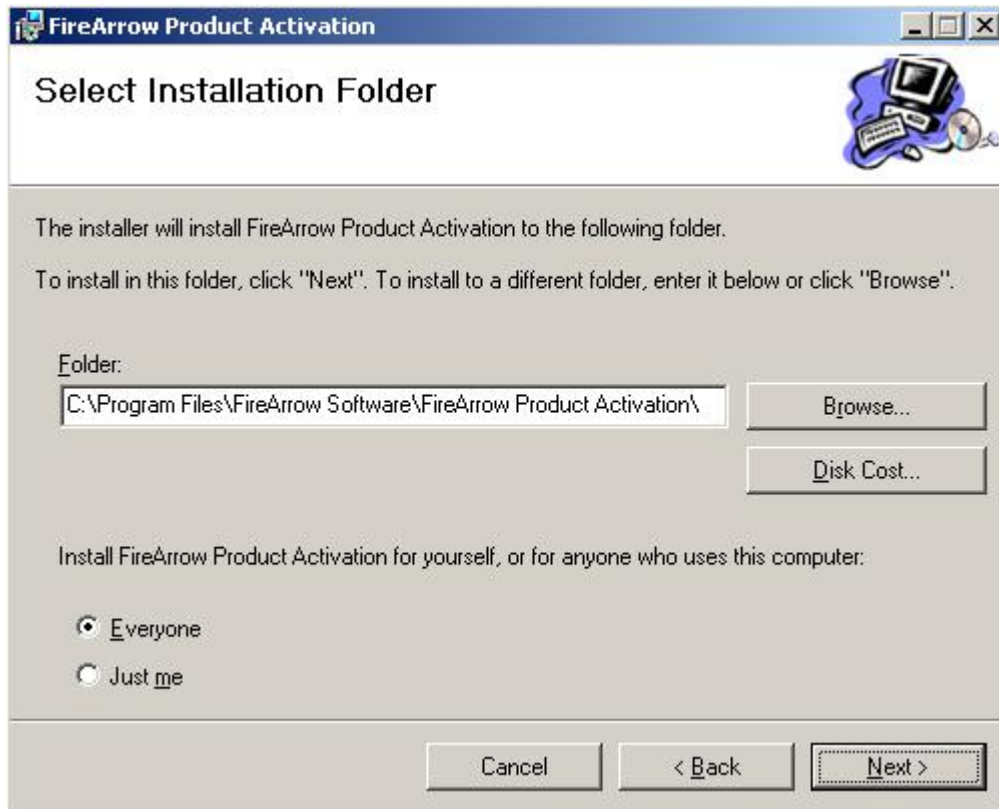
- Open the folder for Product Activation installation and run “Setup.exe”.

Name	Date modified	Type	Size
 FireArrow.ProductActionvation.Installer	8/25/2010 4:05 PM	Windows Installer ...	537 KB
 FireArrow.ProductActivation	8/25/2010 4:05 PM	Application	184 KB
 FireArrow.ProductActivation.RunAs	8/25/2010 4:05 PM	Application	76 KB
 setup	8/25/2010 4:05 PM	Application	421 KB

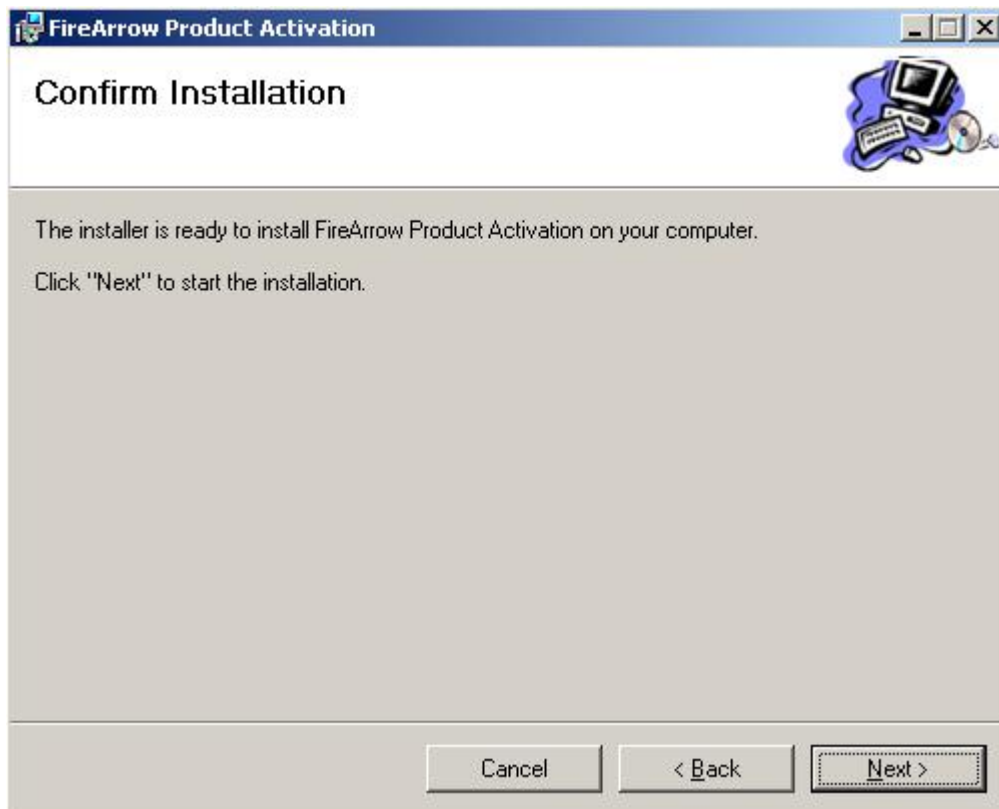
- The setup wizard will be displayed and click “Next” to proceed.



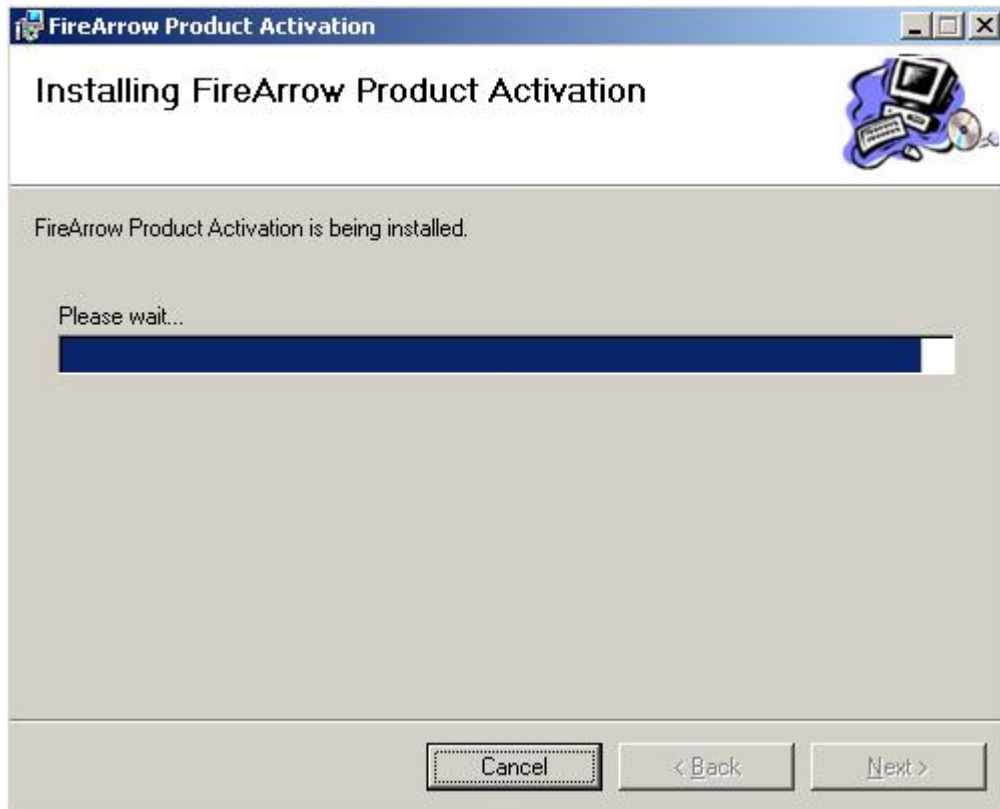
- Select the installation folder, and click ‘Next’.



- Click 'Next' to confirm the installation.



- The wizard starts the installation and display the installation progress.



- Installation is completed successfully and clicks “Close” to exit the wizard.

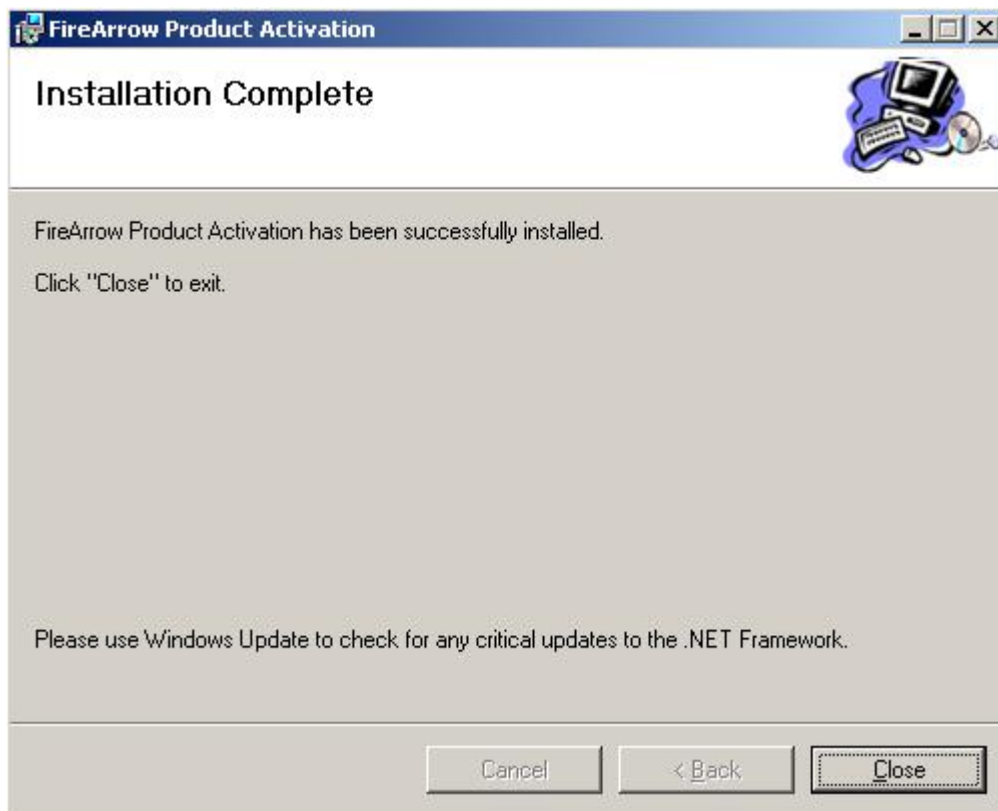


Photo Viewer Web Part Installation

We provide two installation approaches for Photo Viewer web part installation. One is to use the installation wizard for automatic installation. The other way is to use STSADM command tool for manual installation. This section describes both approaches in detail.

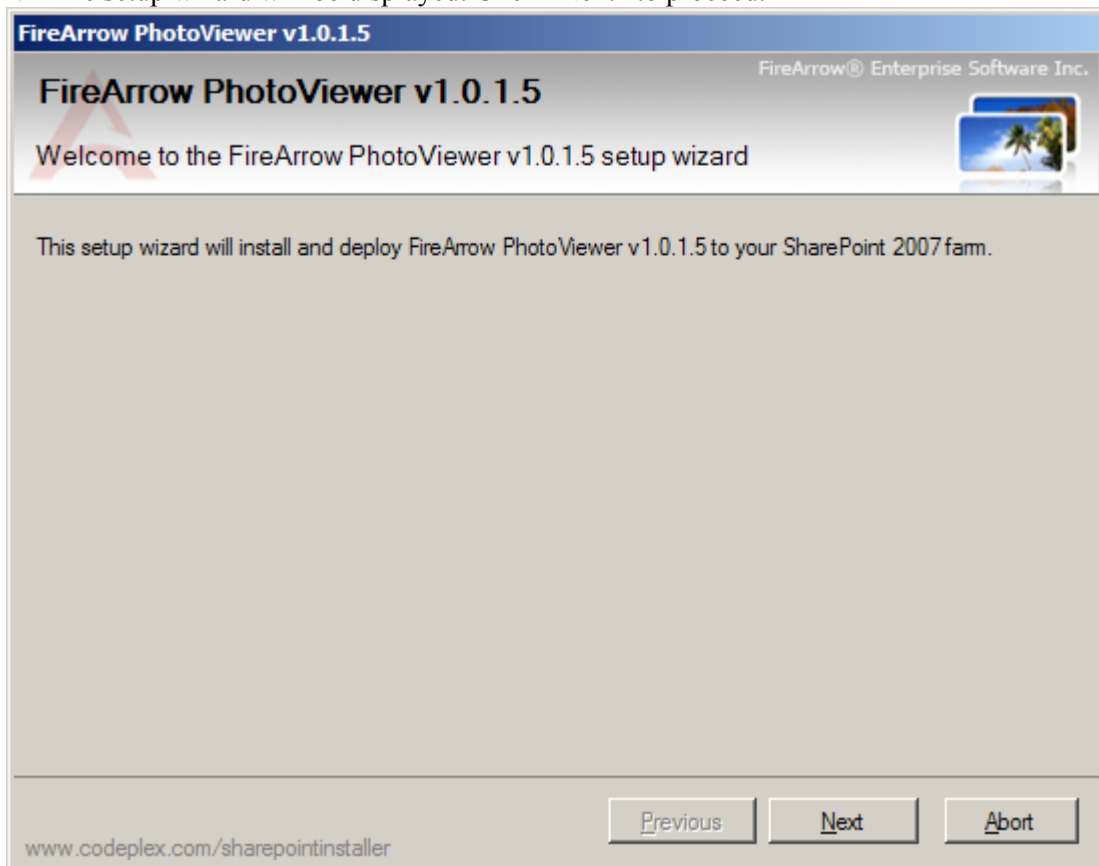
Automatic Installation Approach

The Photo Viewer installation package contains the installer file, solution package file, image, and etc. You must be the SharePoint Farm Administrator for a successful installation. Please follow the following steps for installation.

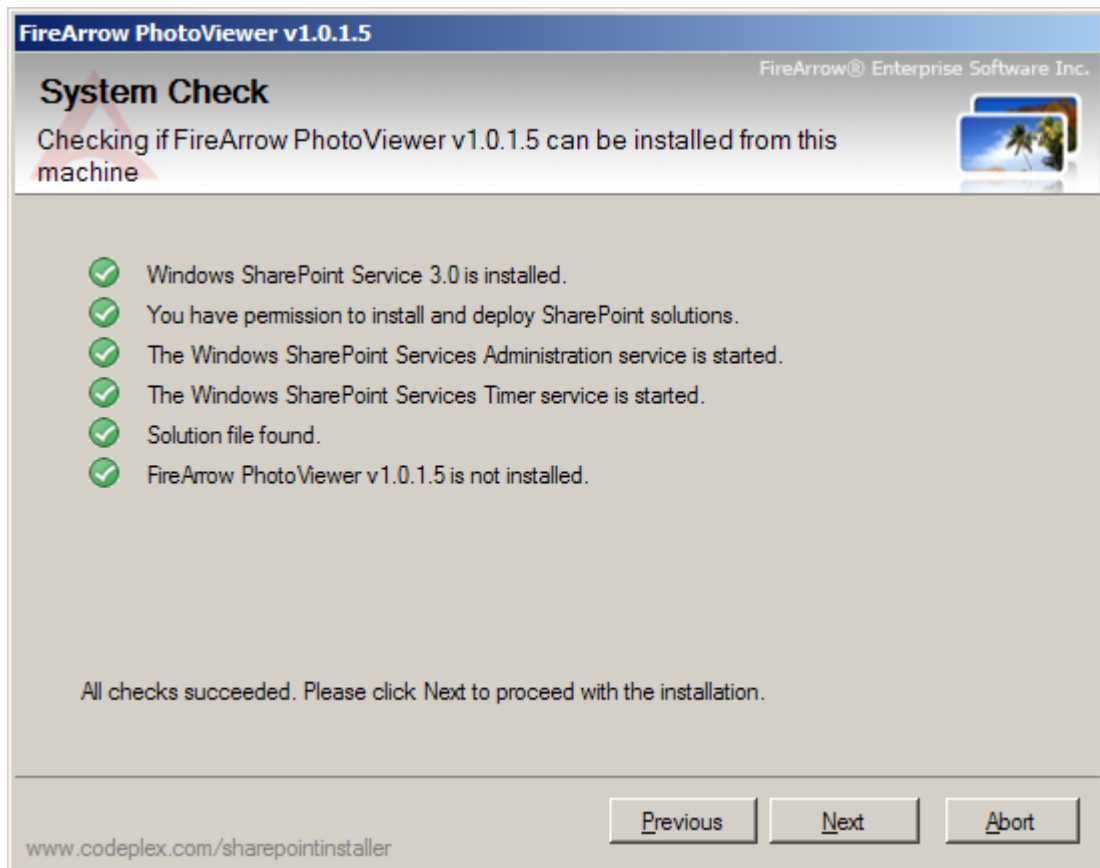
1. Open the folder for PhotoViewer installation and double click the “Setup.exe” to start the installation.

Name	Size	Type
banner.jpg	17 KB	JPEG Image
EULA.rtf	10 KB	Rich Text Document
FireArrow.SharePoint.PhotoViewer.wsp	225 KB	WSP File
Setup.exe	387 KB	Application
Setup.exe.config	1 KB	XML Configuration File

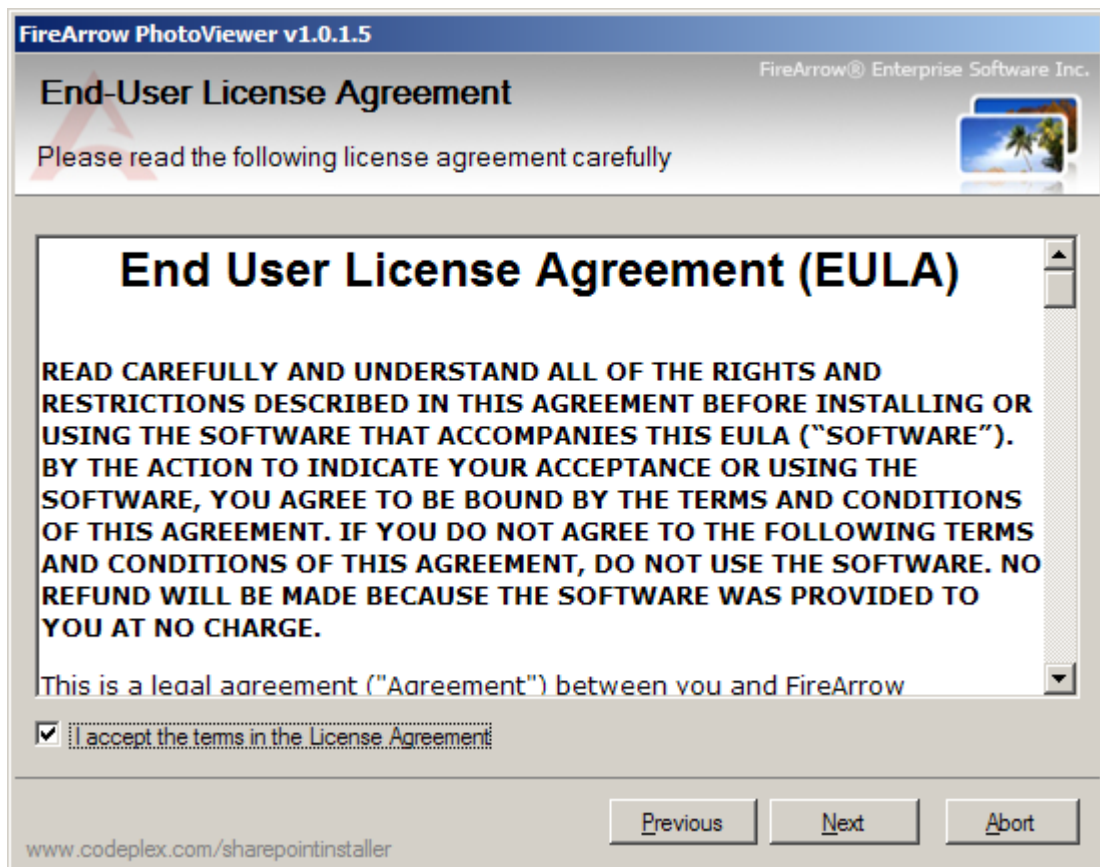
2. The setup wizard will be displayed. Click “Next” to proceed.



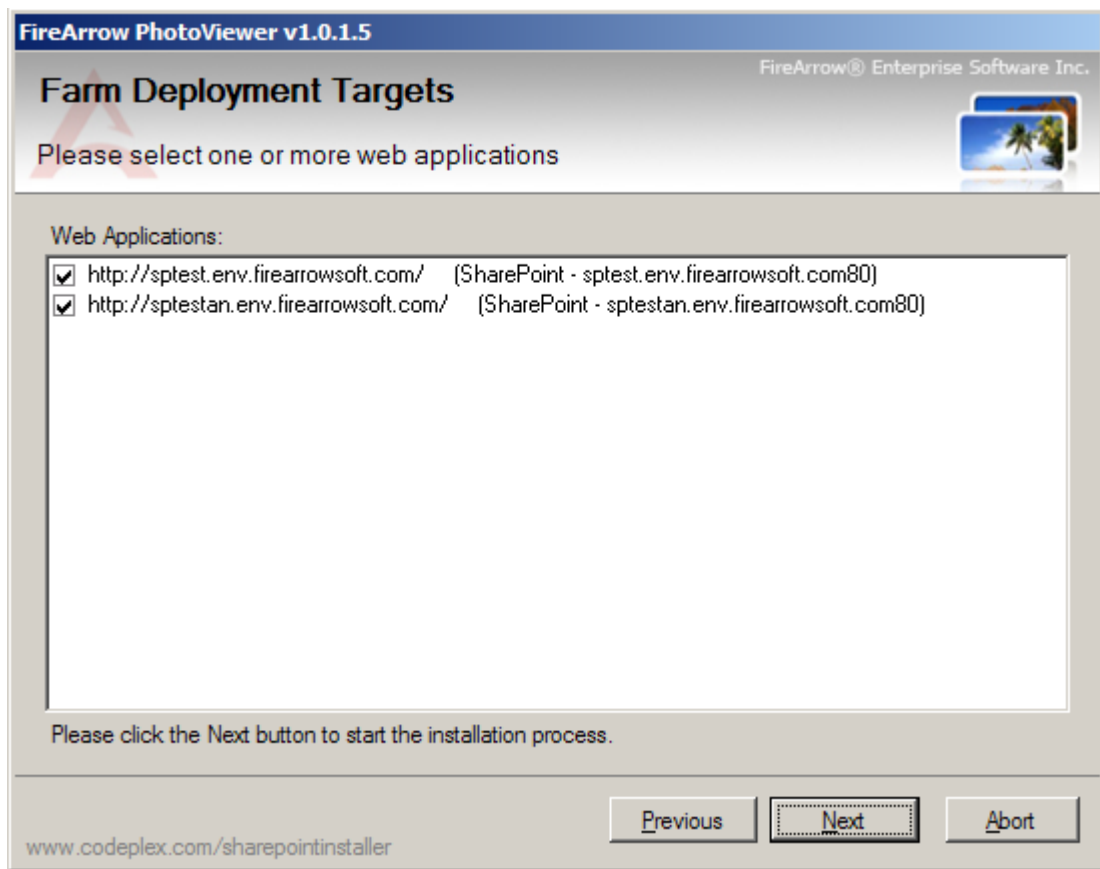
3. Wait for system check to complete and then click “Next”.



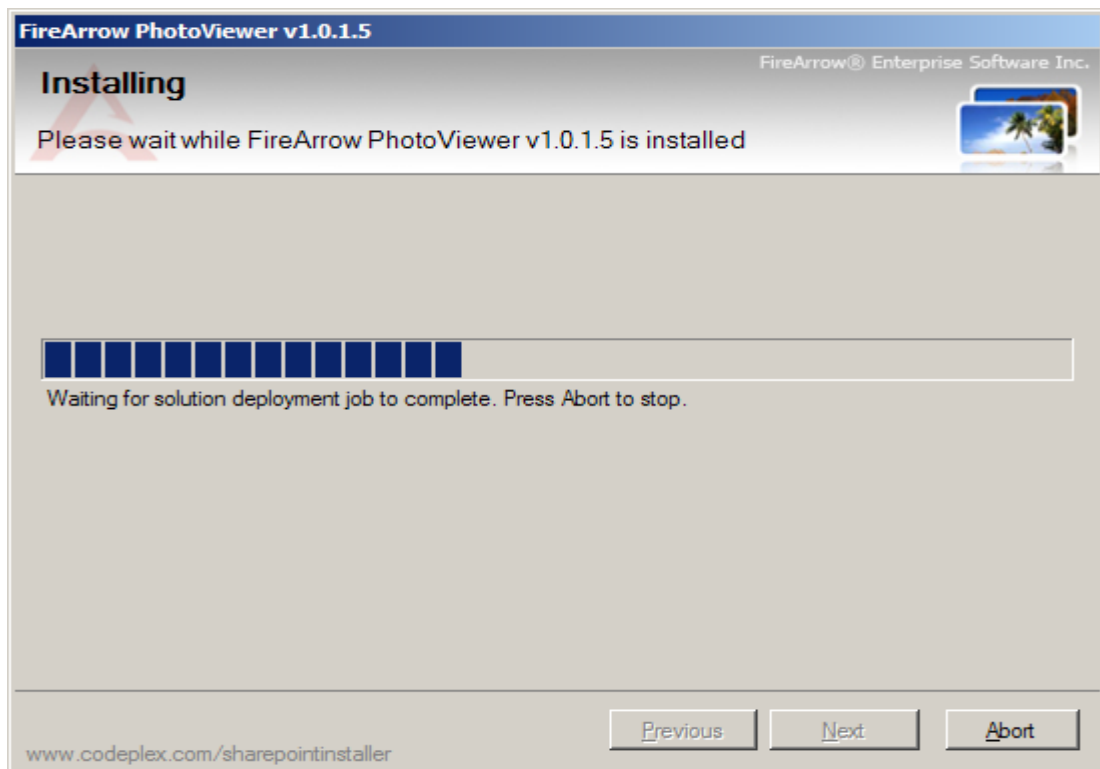
4. After you have read and accepted the License Agreement, click “Next” to continue.



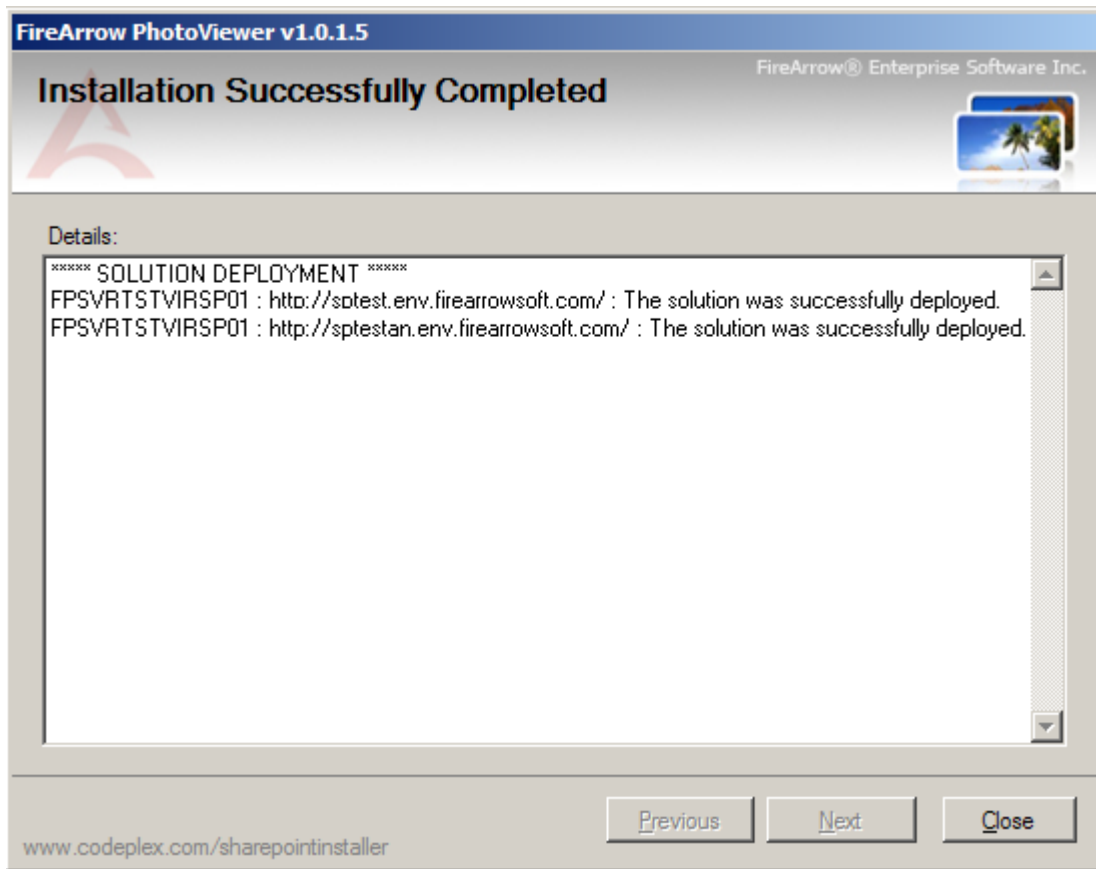
5. Select one or more target web applications and then click "Next".



6. The wizard starts installing and display the installation progress.



- Installation is completed successfully and clicks “Close” to exit the wizard.



Manual Installation Approach

The folder for PhotoViewer installation contains the solution package which you need for manual installation.

Name	Size	Type
banner.jpg	17 KB	JPEG Image
EULA.rtf	10 KB	Rich Text Document
FireArrow.SharePoint.PhotoViewer.wsp	701 KB	WSP File
Setup.exe	387 KB	Application
Setup.exe.config	1 KB	XML Configuration File

The steps for manual installation are as followed:

- Copy the solution package to the server farm and run following commands to add solutions to the server farm:
`stsadm.exe -o addsolution -filename "FireArrow.SharePoint.PhotoViewer.wsp"`
`stsadm -o execadmsvcjobs`
 - Then you need to deploy the solution package. You can deploy the solution package either by running STSADM commands or using the SharePoint 3.0 Central Administration web interface.
8. **Option 1: running STSADM commands**

You need to run the following two commands for solution deployment:

- 1) stsadm -o deploysolution -name "FireArrow.SharePoint.PhotoViewer.wsp" -immediate -url *http://qa.test.FireArrowsoft.com* -force -allowCasPolicies

Note: replace the url (*http://qa.test.firearrowsoft.com*) with your target web application's url.

- 2) stsadm -o execadmsvcjobs

9. Option 2: using SharePoint 3.0 Central Administration Interface

- 1) Open Central Administration, select Operations, and select Solution management under the Global Configuration.

Global Configuration

- [Timer job status](#)
- [Timer job definitions](#)
- [Master site directory settings](#)
- [Site directory links scan](#)
- [Alternate access mappings](#)
- [Manage farm features](#)
- [Quiesce farm](#)
- [Solution management](#)

- 2) Select the solution "FireArrow.SharePoint.PhotoViewer.wsp", and then select Deploy Solution from the Solution Properties.

Central Administration > Operations > Solution Management

Solution Management

This page has a list of the Solutions in the farm.

Name	Status	Deployed To
firearrow.sharepoint.livebanner.wsp	Deployed	http://sptest.env.firearrowsoft.com/
firearrow.sharepoint.photoviewer.wsp	Deployed	http://sptest.env.firearrowsoft.com/
firearrow.sharepoint.rssviewer.wsp	Deployed	http://sptest.env.firearrowsoft.com/
firearrow.sharepoint.stockquote.wsp	Deployed	http://sptest.env.firearrowsoft.com/
firearrow.sharepoint.weatheranddock.wsp	Deployed	http://sptest.env.firearrowsoft.com/

Solution Properties


Deploy Solution | Retract Solution | Back to Solutions

Name:	firearrow.sharepoint.photoviewer.wsp
Type:	Core Solution
Contains Web Application Resource:	Yes
Contains Global Assembly:	No
Contains Code Access Security Policy:	Yes
Deployment Server Type:	Front-end Web server
Deployment Status:	Deployed
Deployed To:	http://sptest.env.firearrowsoft.com/
Last Operation Result:	The solution was successfully deployed.
Last Operation Details:	FPSVRTSTVIRSP01 : http://sptest.env.firearrowsoft.com/ : The solution was successfully deployed.
Last Operation Time:	4/17/2010 8:47 AM

- Set the deployment job schedule and choose the target web application where the solution will be deployed.

Deploy Solution

Use this page to deploy the solution.

<p>Solution Information</p> <p>Information on the solution you have chosen to deploy.</p>	<p>Name: firearrow.sharepoint.photoviewer.wsp</p> <p>Locale: 0</p> <p>Deployed To: http://sptest.env.firearrowsoft.com/</p> <p>Deployment Status:</p>
<p>Deploy When?</p> <p>A timer job is created to deploy this solution. Please specify the time at which you want this solution to be deployed.</p>	<p>Choose when to deploy the solution:</p> <p><input checked="" type="radio"/> Now</p> <p><input type="radio"/> At a specified time:</p> <p>4/17/2010  3 PM <input type="text" value="00"/></p>
<p>Deploy To?</p> <p>The solution contains Web application scoped resources and should be deployed to specific Web applications. Please choose the Web application where you want the solution to be deployed.</p>	<p>Choose a Web application to deploy this solution:</p> <p>http://sharepointtrn/ <input type="text"/></p> <p>Warning: This solution contains a Code Access Security policy. Deploying this solution will change the effective trust policy. Do not proceed unless you trust the solution provider.</p>

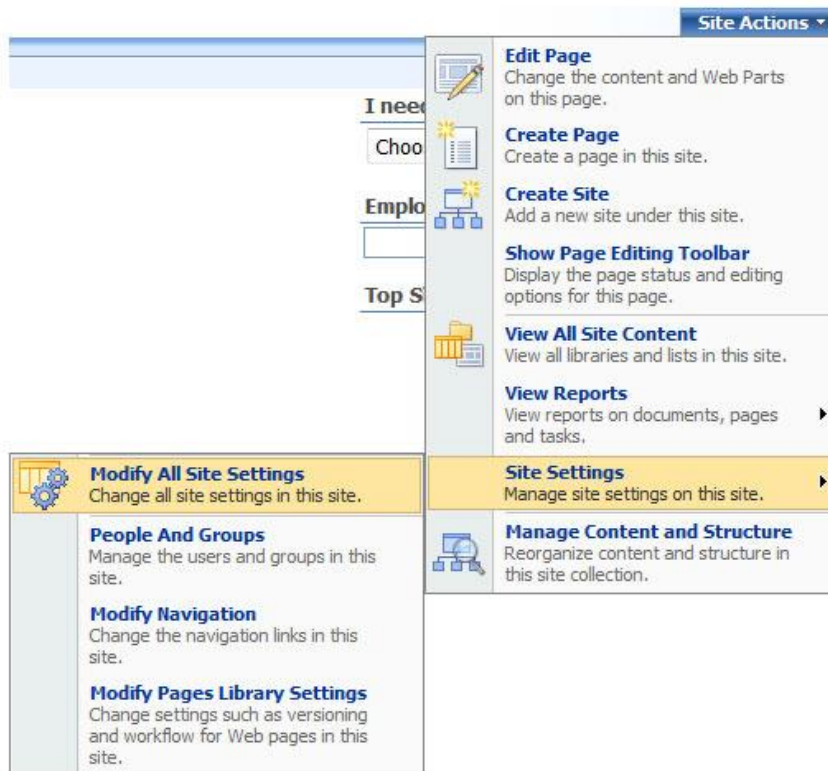
After the solution is deployed to target web application, run the command `"iisreset /noforce"` to restart IIS

3. Post-Installation Tasks

Feature Activation

After installation, you need to perform the following steps to activate the feature before the web part is ready to use.

1. Go to the Site Settings page: click “Site Actions”→ “Site Settings”→ “Modify All Site Settings” under MOSS screen.



2. Select “Site collection features”.







Site Collection Administration

- Search settings
- Search scopes
- Search keywords
- Recycle bin
- Site directory settings
- Site collection usage reports
- Site collection features
- Site hierarchy
- Portal site connection
- Site collection audit settings
- Audit log reports
- Site collection policies
- Site collection output cache
- Site collection cache profiles
- Site collection object cache
- Variations
- Variation labels
- Variation logs
- Translatable columns

3. Click “Active” Button to active FireArrow Photo Viewer Web Part.

QA With Anonymous Access > Site Settings > Site Features

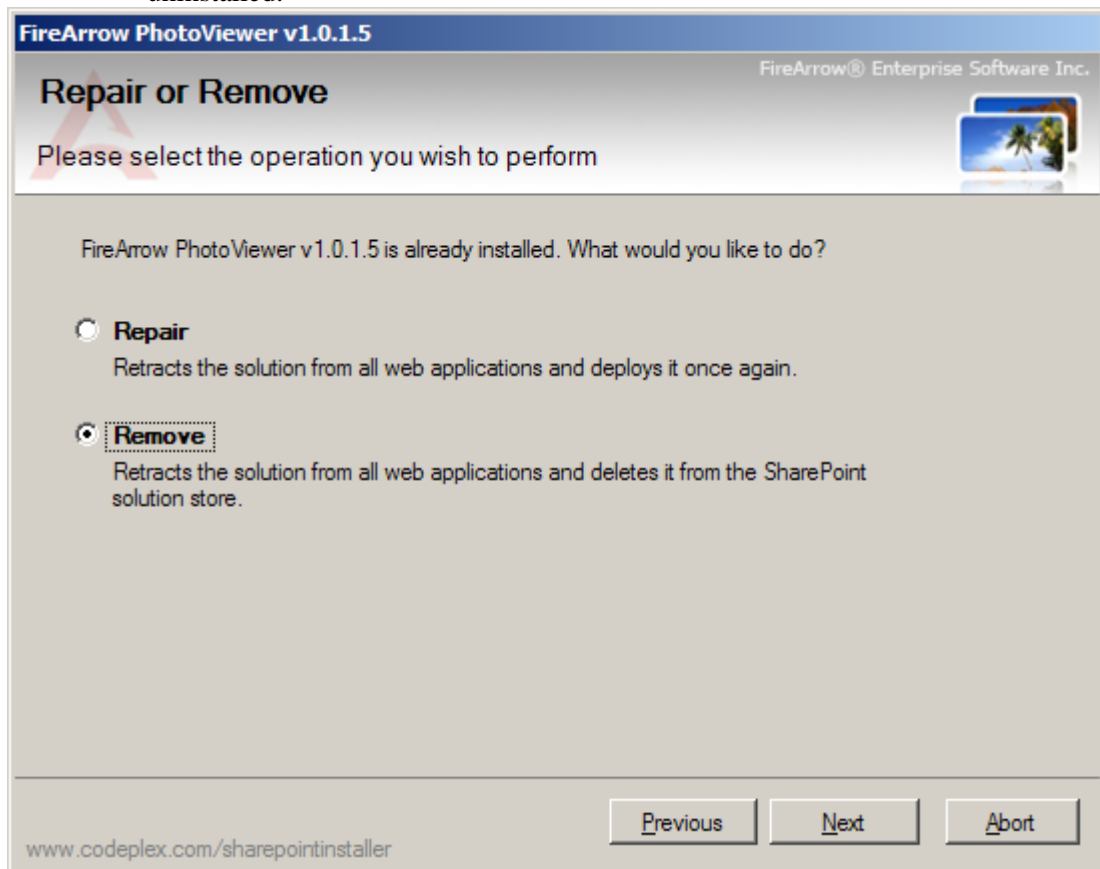
Site Collection Features

Name	Status
 Collect Signatures Workflow Gathers signatures needed to complete a Microsoft Office document.	Deactivate Active
 Disposition Approval Workflow Manages document expiration and retention by allowing participants to decide whether to retain or delete expired documents.	Deactivate Active
 FireArrow Live Banner Web Part Offers an effortless way to display and manage live banners in SharePoint Sites. It provides a lot of rich features, styles and controls to display image banners from SharePoint picture library.	Deactivate Active
 FireArrow Photo Viewer Web Part Provides elegant viewer styles, transition effects and features to display images from a SharePoint picture library.	Deactivate Active
 FireArrow Rss Viewer Web Part Allows users to configure and view RSS feeds on their Windows SharePoint Services 3.0 Platform (WSS 3.0)	Deactivate Active
 FireArrow Stock Quote Web Part Allows users to configure and display a stock watch list on your SharePoint portal.	Deactivate Active

4. **Un-installation**

You can use FireArrow Photo Viewer Web Part Installer to uninstall Photo Viewer Web Part. To uninstall the web part:

- 1) Run the setup.exe on your system.
- 2) Select the radio button for “Remove” and click “Next”, the web part will be uninstalled.



5. License Management

The FireArrow Photo Viewer is allowed to use for 30-days after the installation without license activation. It is always recommended to provision your valid license activation key immediately after the installation is completed. Please go to the FireArrow web site (<http://www.firearrowsoft.com>) to purchase the software in order to obtain the license activation key.

After the software purchase, please email us (support@firearrowsoft.com) the following information in order to generate the product activation code:

1. Product key
2. Order confirmation #

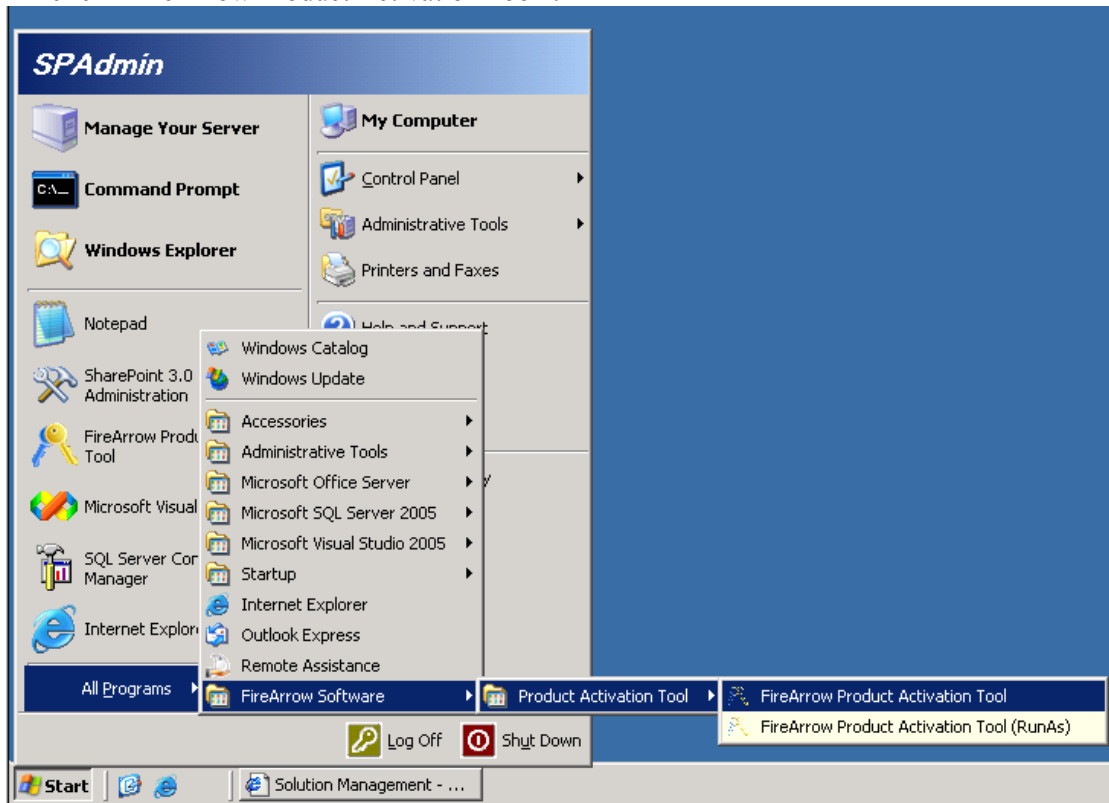
We will email you the product activation key.

You can obtain the product key information through the Product Activation Tool. Please follow the steps in below section to obtain the product key and complete the license activation.

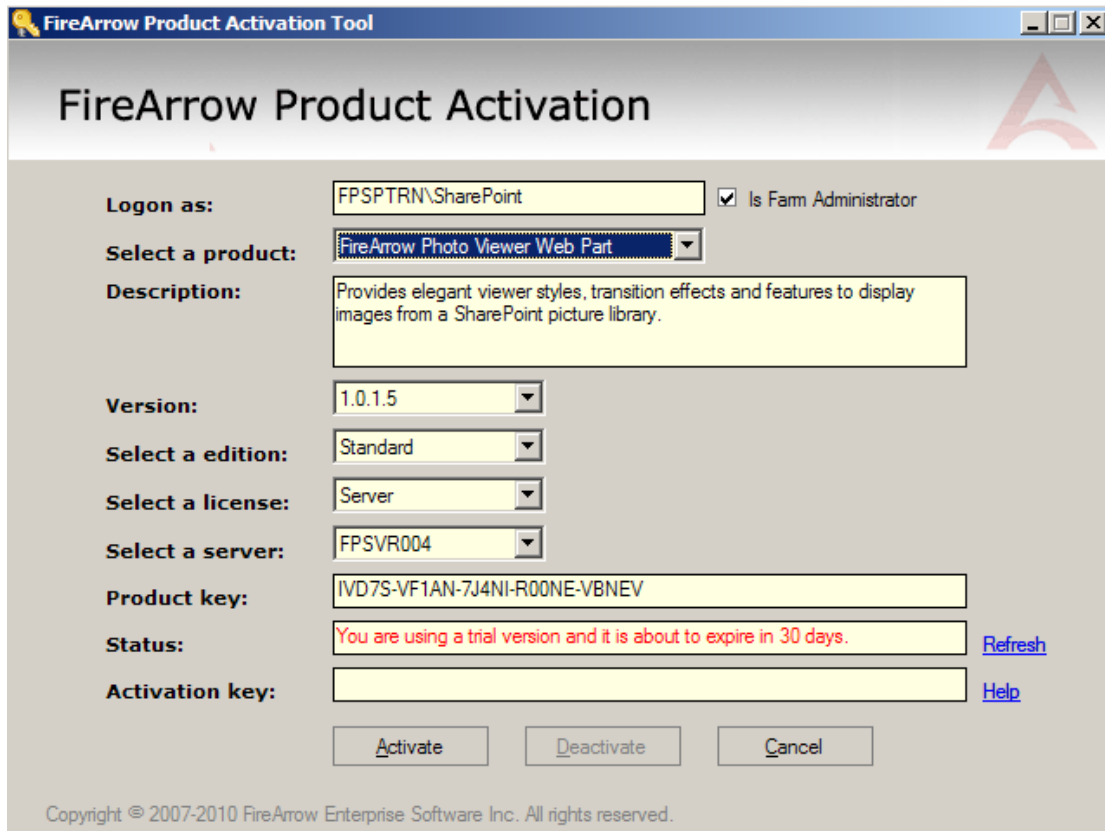
License Activation

After the Product Activation Manager is successfully installed, follow below steps to obtain the product key information and activate the FireArrow product license in your server.

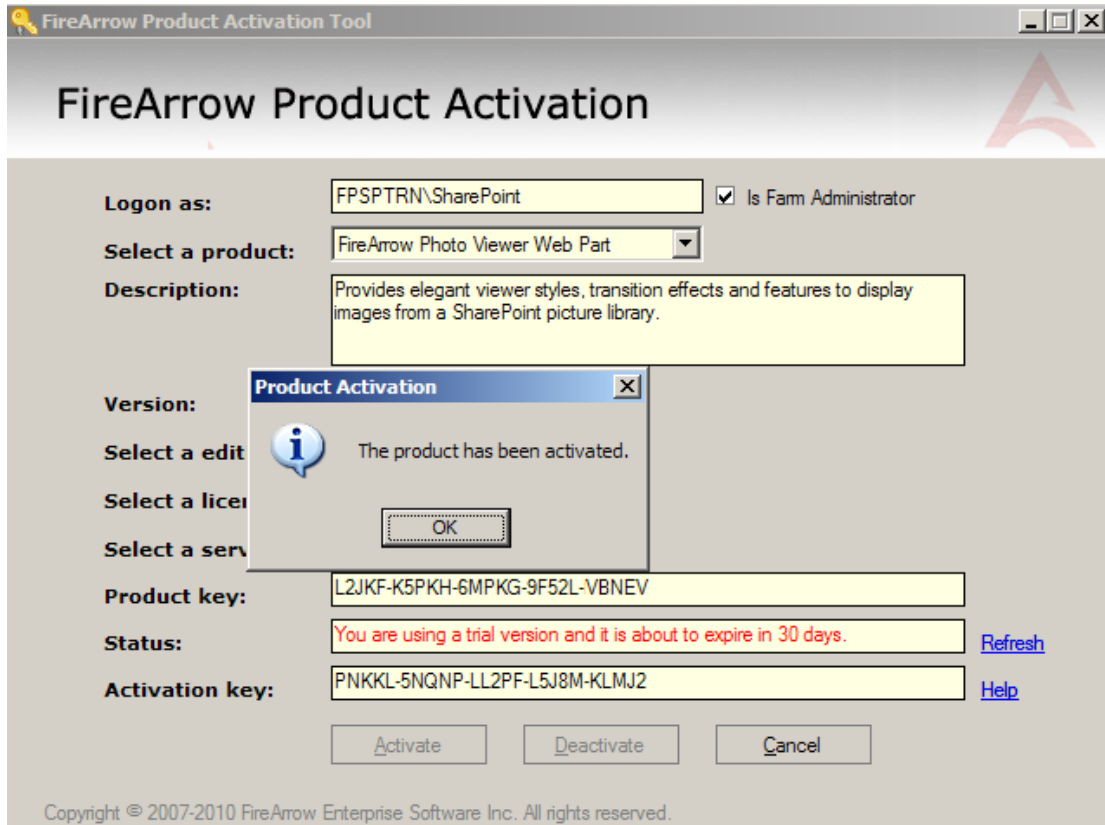
- Go to “Start” menu→All Programs→FireArrow Software→Product Activation Tool and click “FireArrow Product Activation Tool”.



- Select the ‘FireArrow Photo Viewer’ from the product dropdown list and the corresponding product information will be displayed in the form, including the “Product Key” information. You can also see the license status from the “Status” field. Before activation, the status will indicate you are using a trial version.

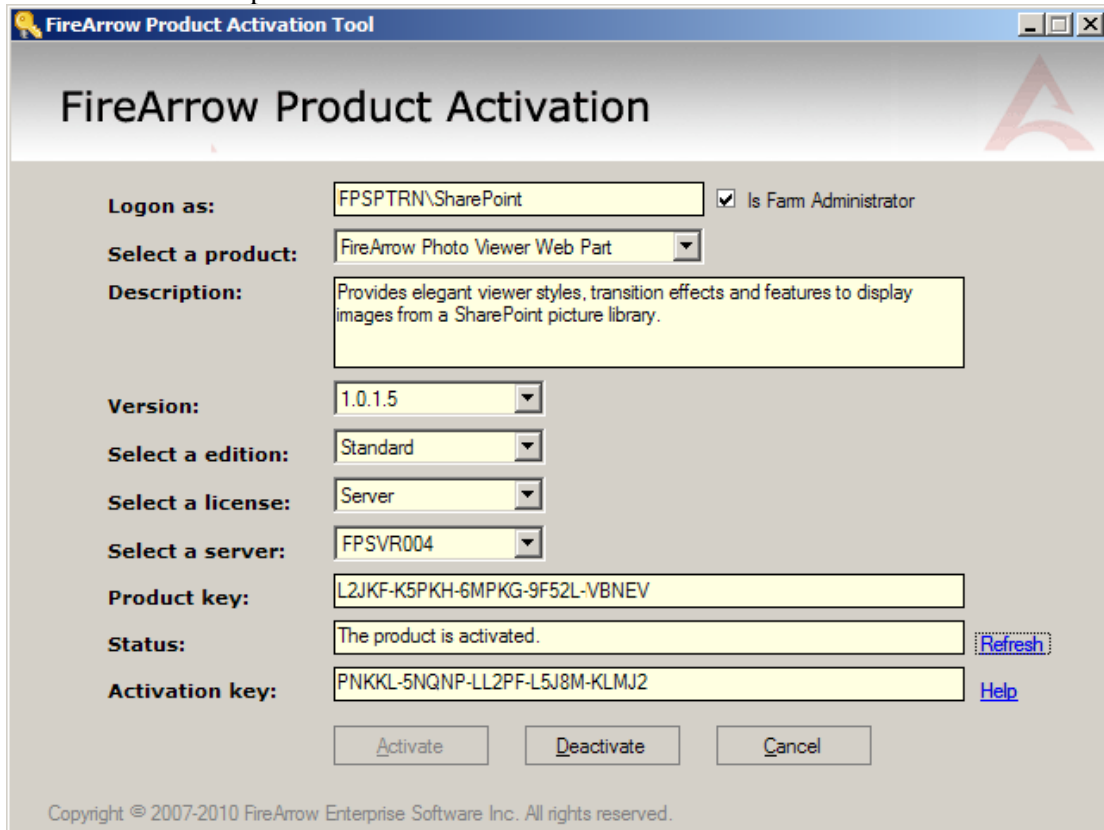


- Once you get the Activation Key, enter it into the ‘Activation Key’ field, and click ‘Activate’ button.



- Click OK in the pop-up window to confirm the activation. And you will notice that the message in the Status field is changed to “The product is activated”. The product

activation is completed.



FireArrow Product Activation Tool

FireArrow Product Activation

Logon as: FPSPTRN\SharePoint Is Fam Administrator

Select a product: FireArrow Photo Viewer Web Part

Description: Provides elegant viewer styles, transition effects and features to display images from a SharePoint picture library.

Version: 1.0.1.5

Select a edition: Standard

Select a license: Server

Select a server: FPSVR004

Product key: L2JKF-K5PKH-6MPKG-9F52L-VBNEV

Status: The product is activated. [Refresh](#)

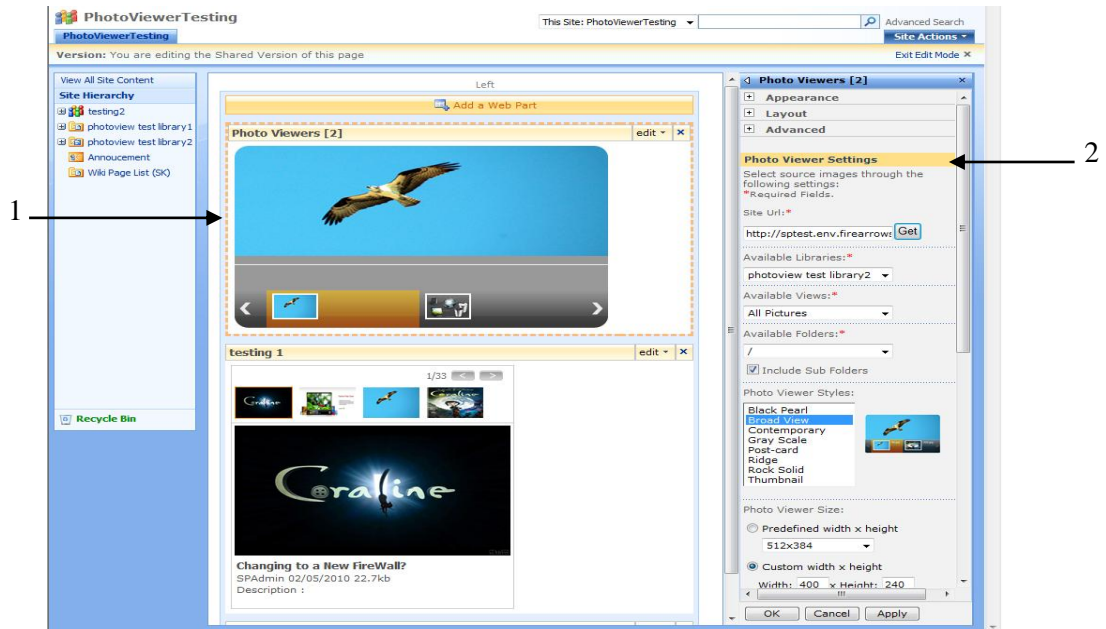
Activation key: PNKKL-5NQNP-LL2PF-L5J8M-KLMJ2 [Help](#)

Copyright © 2007-2010 FireArrow Enterprise Software Inc. All rights reserved.

Chapter 3: User & Administrative Guide

1. Interface Introduction

Below the image is the standard configuration interface when the Photo Viewer web part is placed into a SharePoint page.



Key to areas on the interface:

1. Web Part Zone: a container where Photo Viewer web part is located.
2. Photo Viewer Web Part Tool Pane: to configure Photo Viewer web part properties and settings.

2. Web Part Setting Overview

The screenshot shows the 'Photo Viewers' settings dialog box. It is organized into sections: Appearance, Layout, and Advanced. The 'Photo Viewer Settings' section is expanded, showing options for source images, libraries, views, folders, styles, size, alignment, auto-play, transition effects, and mapping image properties. Ten numbered arrows point to specific settings: 1 points to the Site Url field, 2 to the Photo Viewer Styles list, 3 to the Photo Viewer Size section, 4 to the Display Alignment section, 5 to the Auto Play checkbox, 6 to the Maximum navigable icons field, 7 to the Transition Effect dropdown, 8 to the Transition Time field, 9 to the Mapping Image Properties section, and 10 to the Add Hyperlink checkbox.

Key to areas on interface:

1. Select image source
2. Choose Photo Viewer style
3. Set Viewer display size
4. Set display alignment
5. Set auto-play mode and speed
6. Set the maximum navigable icons
7. Set image transition effects
8. Set transition interval time
9. Image property mapping
10. Set hyperlinks

2.1 Selecting Image Source

The FireArrow Photo Viewer Web Part allows you to select images at the views level and folder level from a SharePoint library.

Site Url: Enter the site url where the source image library is located and click “Get” button.
Available Libraries: This dropdown list displays all the available libraries from the source site. You can select the target library from the list.

Available Views: This dropdown list displays available views from the selected target library. You can use views to organize the images and select the view for display.

Available Folders: This dropdown list display the folders contained by the selected view in the target library. You can select a folder to display the images only from the selected folder. If no folder is selected, all images from the selected view will be displayed.

Include Sub Folders: This checkbox is checked by default to include images from the sub folders. Photo Viewer web part will display all images from current directory and sub-folders. If it is not checked, only images in the current path will be displayed.

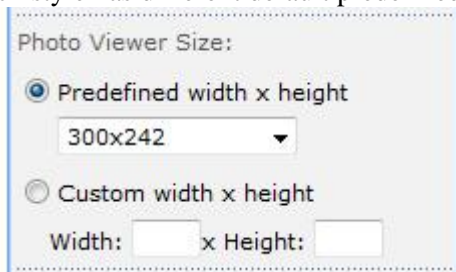
2.2 Setting Photo Viewer Style

Photo Viewer Web Part provides eight different styles to choose and each style has its own configuration options. When you select a style from the list, the setting page will be refreshed to load the configuration options for the selected style. The next section "Photo Viewer Display Styles" explains in detail about every display style provided by the web part.



2.3 Setting Size

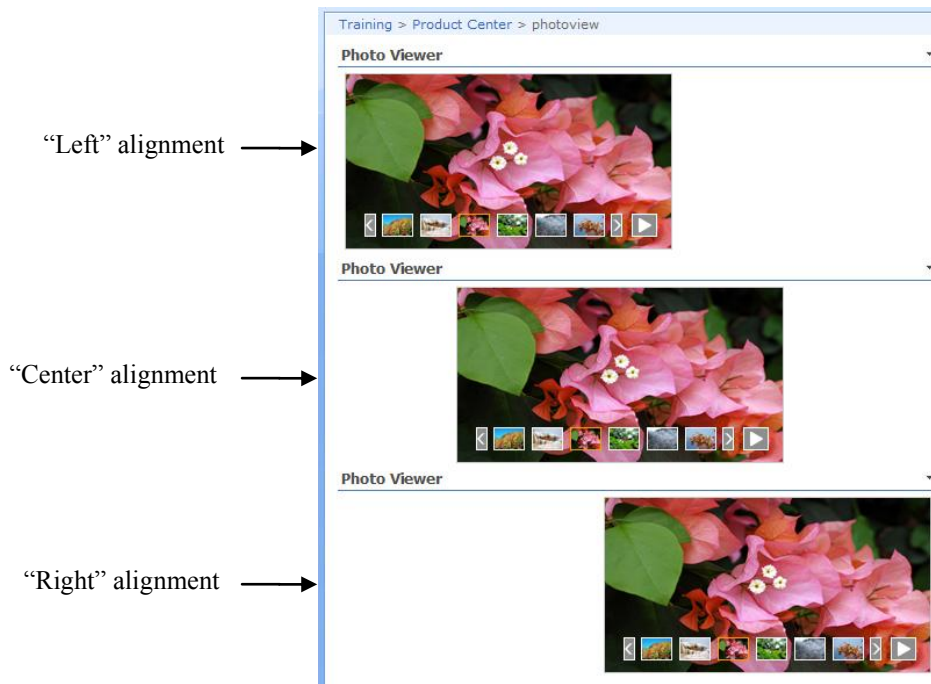
You can select the pre-defined size for the selected photo viewer style or set its own size. Each style has different default predefined sizes.



2.4 Setting Display Alignment

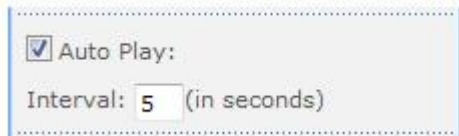
You can adjust the display alignment of the Photo Viewer in the web part zone by selecting the alignment options below.



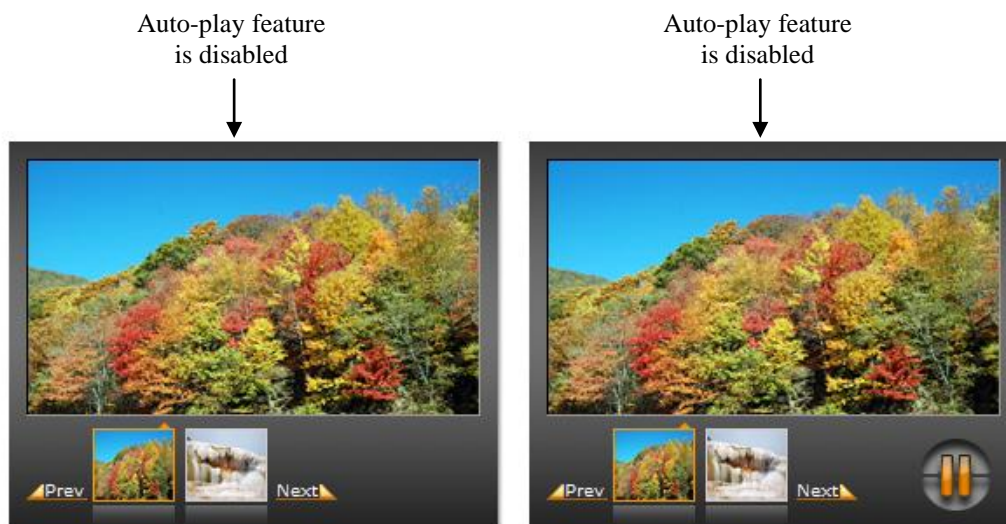


2.5 Enabling Auto-Play Feature

You can enable the auto-play feature by checking the "Auto Play" checkbox and setting the time interval between images.



If the Auto-play feature is disabled by un-checking the checkbox, the Play/Pause button will not appear in the Photo Viewer interface. After you enable the Auto-Play feature, the Play/Pause button will be displayed in the interface.



2.6 Configuring Navigation

You can control the maximum number of thumbnail navigation displayed in the photo viewer user interface by setting a number in the input box below.

Maximum navigable icons: 6



Maximum number of navigable icons = 6



Maximum number of navigable icons = 4

2.7 Setting Image Transition Effect

You can choose the transition effect from the dropdown list and also set transition lasting time.

Transition Effect:
None

Transition effect with * is for IE browser only

Transition Time:
500 (in milliseconds)

The photo viewer web part provides twenty-one different transition effects (see image below).

Transition effect with * is for IE browser only. (see transition effect in Appendix 1)

Transition Effect:

- None
- Default
- Dropdown
- WipeRight
- BlindZ
- Barn*
- Blinds*
- CheckerBoard*
- Fade*
- GradientWipe*
- Inset*
- Iris*
- Pixelate*
- RadialWipe*
- RandomBars*
- RandomDissolve*
- Slide*
- Spiral*
- Stretch*
- Strips*
- Wheel*
- Zigzag*

Apply

2.8 Mapping Image Properties

FireArrow Photo Viewer provides the feature to display image property information by

mapping the property columns from the library to the pre-defined section in the user interface of the photo viewer.

Mapping Image Properties:

Section	From
<input type="checkbox"/> Title:	<input type="text"/>
<input type="checkbox"/> Author:	<input type="text"/>
<input type="checkbox"/> Date:	<input type="text"/>
<input type="checkbox"/> Size:	<input type="text"/>
<input type="checkbox"/> Details:	<input type="text"/>

Add Hyperlink:

Text to display:

Address from:

"Section": pre-defined area in the user interface of selected photo viewer style.

"From": column dropdown list from the image source. Available columns in the dropdown list are subject to the selected view settings.

The mapping options vary slightly for different display styles. Please refer to the next section which describes the display styles and the associated configuration options in detail.

Below is an example to show the available columns for mapping from the selected image source view, the "All Documents" view.

Image library1

New Upload Actions Settings View: **All Documents**

Type	Name	Image Title	Description	Modified By	Modified
Folder	Hiking			SPAdmin	2/21/2010 10:15 AM
Folder	Yellowstone			SPAdmin	2/21/2010 10:16 AM
Image	DSC_3141 NEW	Colorful Fall	The glorious colors on the mountain.	SPAdmin	2/21/2010 9:21 AM
Image	DSC_4034 NEW	Mammoth Terraces	The Mammoth Hot Spring Terrances are a popular feature in Yellowstone.	SPAdmin	2/22/2010 11:05 AM
Image	DSC_4055 NEW	Flower in Callaway Garden		SPAdmin	2/21/2010 9:25 AM
Image	DSC_4112 NEW	Butterfly		SPAdmin	2/21/2010 9:27 AM
Image	DSC_5601 NEW	Silver trees	The snow on mountain makes it a fairyland.	SPAdmin	2/21/2010 9:29 AM
Image	DSC_5980 NEW	Maple Leaf	The beautiful simbol for Autum.	SPAdmin	2/21/2010 9:30 AM

Below image shows the available columns in the down list is corresponding to the "All Documents" view setting.

Mapping Image Properties:

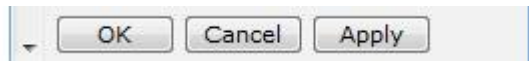
Section	From
<input checked="" type="checkbox"/> Title:	<input type="text"/>
<input type="checkbox"/> Author:	<input type="text"/>
<input type="checkbox"/> Date:	<input type="text"/>
<input type="checkbox"/> Size:	<input type="text"/>
<input type="checkbox"/> Details:	<input type="text"/>

Dropdown list contents:

- Type
- Name
- Image Title
- Description
- Modified By
- Modified

2.9 Applying Settings

Click the "Apply" button at the bottom of setting panel to apply the settings. Click "OK" to apply and exit edit mode.



3. Photo Viewer Display Styles

FireArrow Photo Viewer provides eight display styles for you to choose. Each style has distinct look and feel and some unique settings. This section explains the distinct user interface and configuration options for each style.

3.1 Black Pearl

Below the image shows the appearance of the "Black Pearl" style.



The designated area is designed to display additional image information. It is divided into small sections. Below the image shows the layout of the various small sections in the designated area.



Each section can be mapped to an image property/column through below setting options.

Mapping Image Properties:

Section	From
<input checked="" type="checkbox"/> Title:	Image Title
<input checked="" type="checkbox"/> Author:	Modified By
<input checked="" type="checkbox"/> Date:	Modified
<input checked="" type="checkbox"/> Size:	
<input checked="" type="checkbox"/> Details:	Description

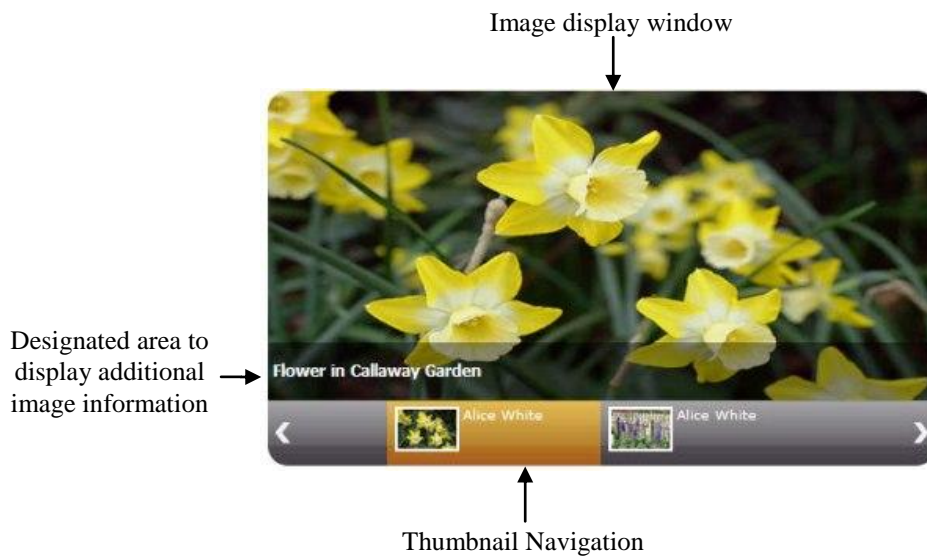
Add Hyperlink:

Text to display: Learn More

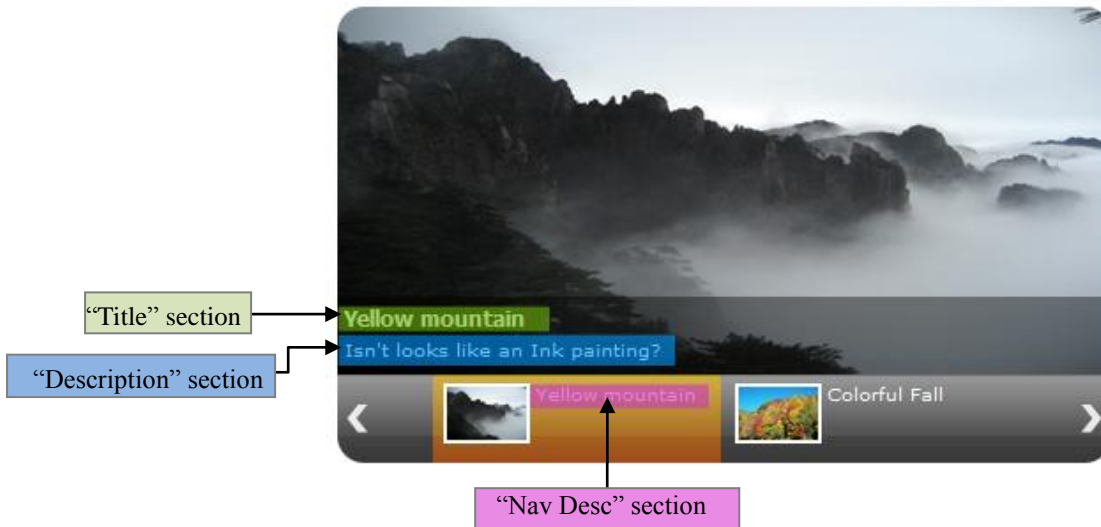
Address from: URL

3.2. Broad View

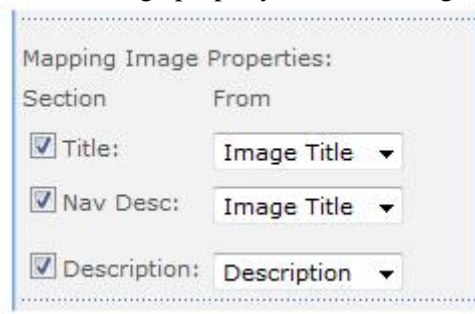
Below the image shows the appearance of the "Broad View" style.



The designated area is designed to display additional image information. It is divided into small sections. Below the image shows the layout of the various small sections in the designated area.

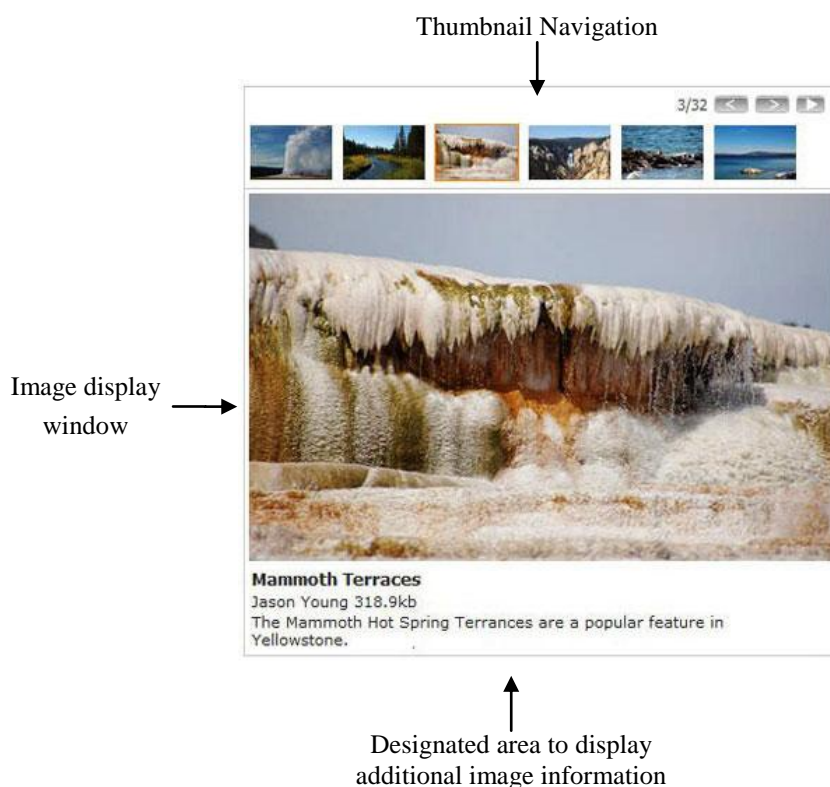


Each section can be mapped to an image property/column through below setting options.

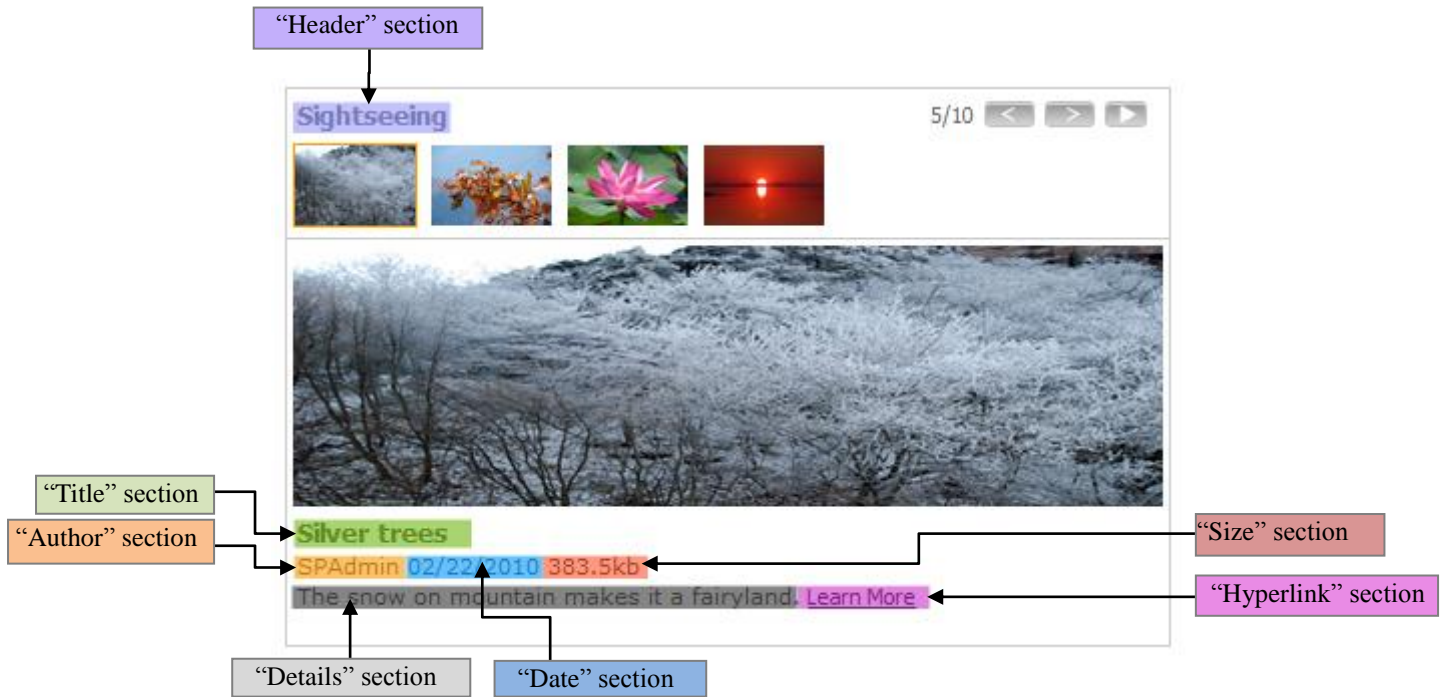


3.3 Contemporary

Below the image shows the appearance of the "Contemporary" style.



The designated area is designed to display additional image information. It is divided into small sections. Below the image shows the layout of the various small sections.

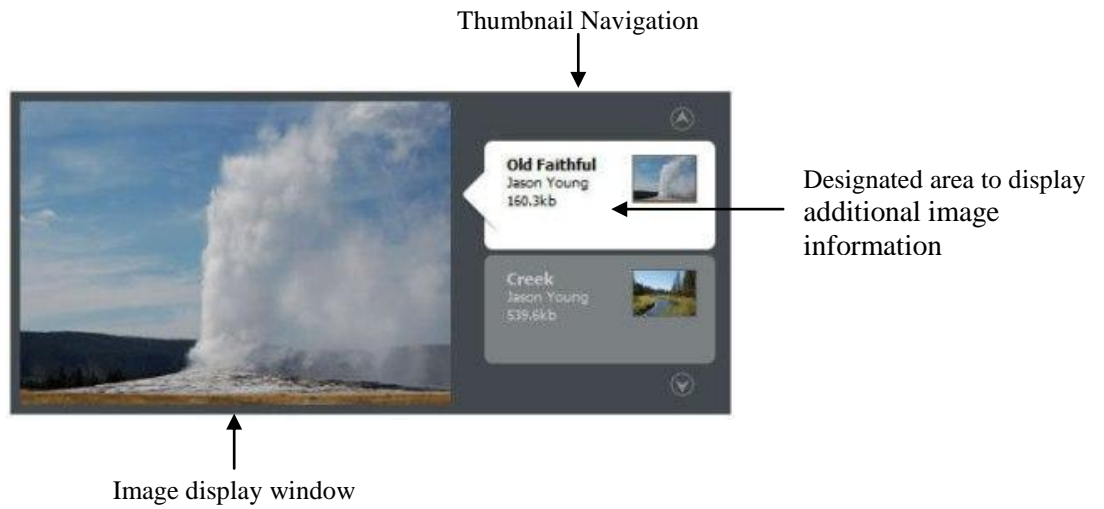


Each section can be mapped to an image property/column through below setting options.

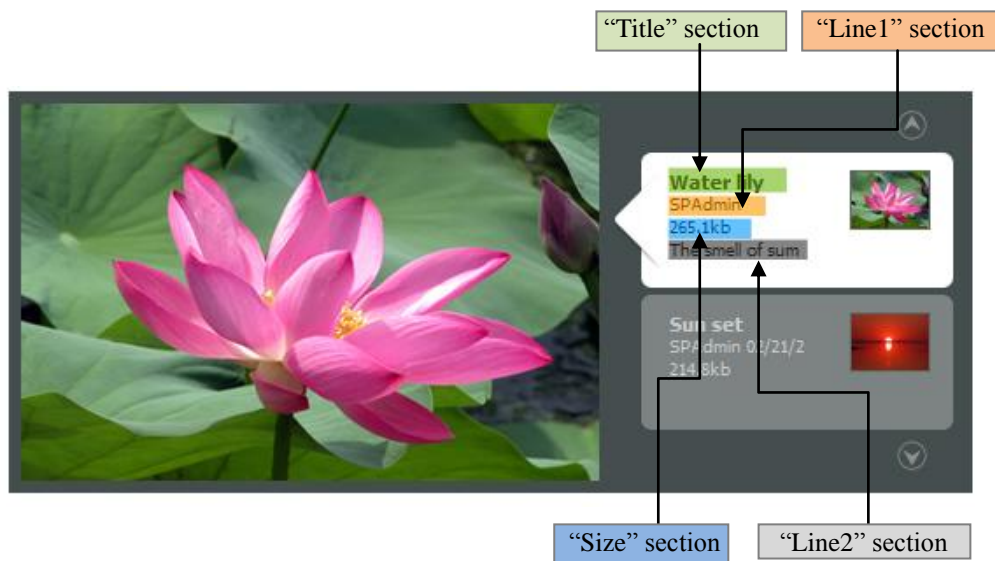
Header: <input type="text" value="Sightseeing"/>	
Mapping Image Properties:	
Section	From
<input checked="" type="checkbox"/> Title:	<input type="text" value="Image Title"/> ▼
<input checked="" type="checkbox"/> Author:	<input type="text" value="Modified By"/> ▼
<input checked="" type="checkbox"/> Date:	<input type="text" value="Modified"/> ▼
<input checked="" type="checkbox"/> Size:	
<input checked="" type="checkbox"/> Details:	<input type="text" value="Description"/> ▼
<input checked="" type="checkbox"/> Add Hyperlink:	
Text to display:	<input type="text" value="Learn More"/>
Address from:	<input type="text" value="URL"/> ▼

3.4 Gray Scale

Below the image shows the appearance of the “Gray Scale” style.



The navigation section provides a designated area to display additional image information. It is divided into small sections. Below the image shows the layout of the various small sections.

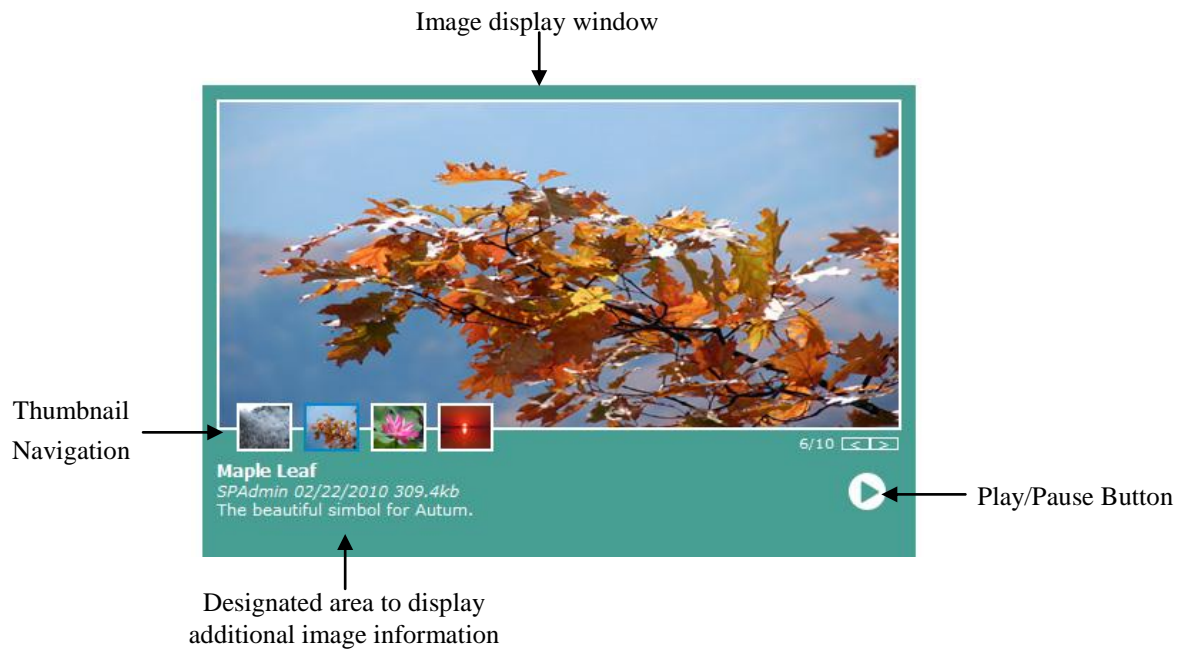


Each section can be mapped to an image property/column through below setting options.

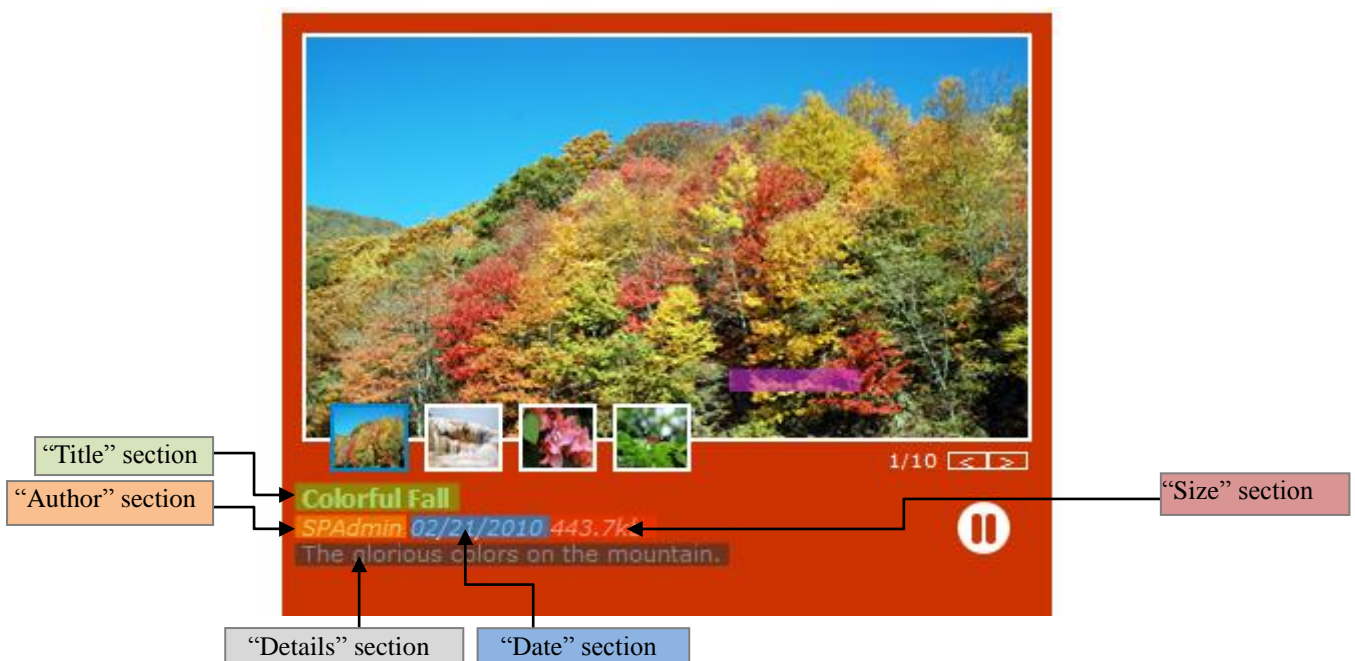
Mapping Image Properties:	
Section	From
<input checked="" type="checkbox"/> Title:	Image Title
<input checked="" type="checkbox"/> Line 1:	Modified By
<input checked="" type="checkbox"/> Size:	
<input checked="" type="checkbox"/> Line 2:	Description

3.5 Post-card

Below the image shows the appearance of the “Post-card” style.



The designated area is designed to display additional image information. It is divided into small sections. Below the image shows the layout of the various small sections.



Each section can be mapped to an image property/column through below setting options.

Mapping Image Properties:

Section	From
<input checked="" type="checkbox"/> Title:	Image Title
<input checked="" type="checkbox"/> Author:	Modified By
<input checked="" type="checkbox"/> Date:	Modified
<input checked="" type="checkbox"/> Size:	
<input checked="" type="checkbox"/> Details:	Description

Add Hyperlink:

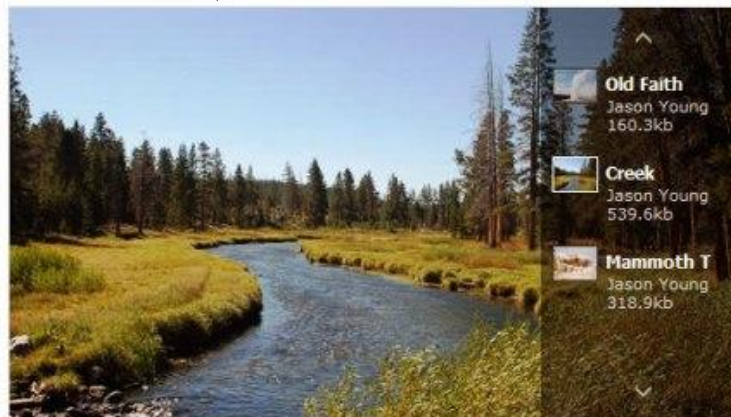
Text to display:

Address from:

3.6 Ridge

Below the image shows the appearance of the “Ridge” style.

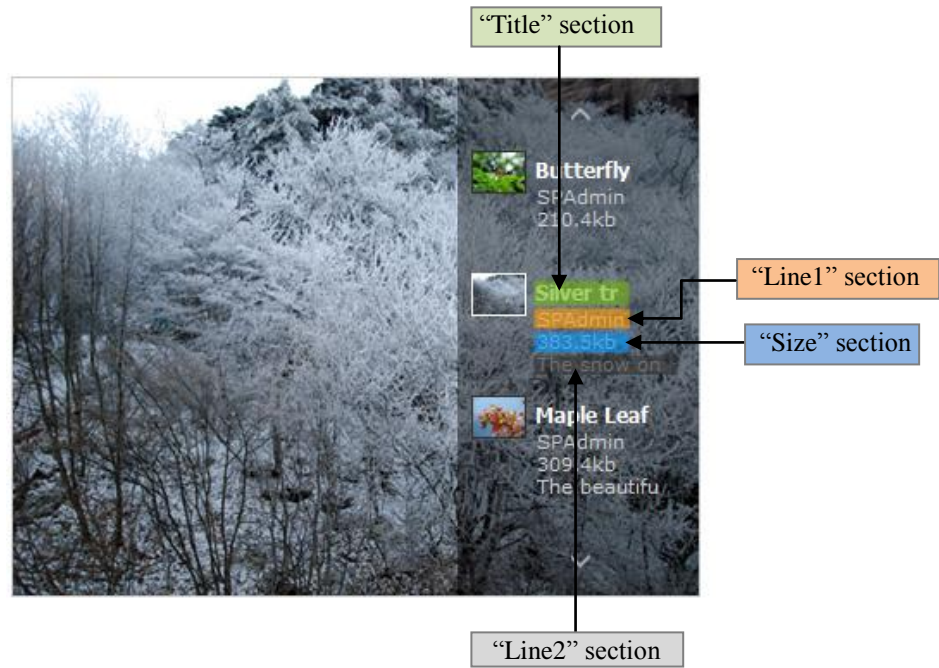
Image display window



Thumbnail Navigation

Designated area to display additional image information

The navigation section provides a designated area to display additional image information. It is divided into small sections. Below the image shows the layout of the various small sections.



Each section can be mapped to an image property/column through below setting options.

Mapping Image Properties:

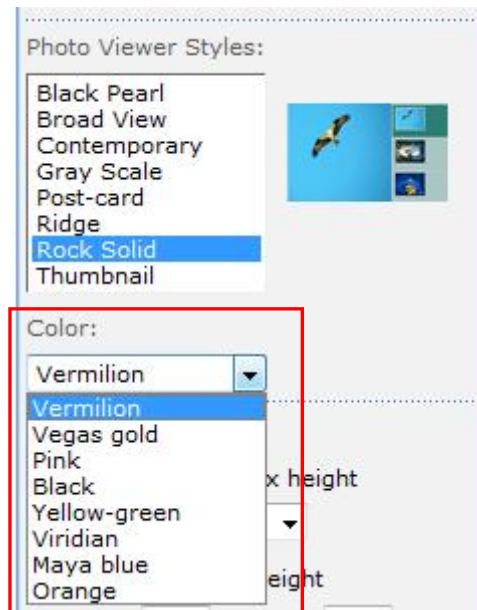
Section	From
<input checked="" type="checkbox"/> Title:	Image Title
<input checked="" type="checkbox"/> Line 1:	Modified By
<input checked="" type="checkbox"/> Size:	
<input checked="" type="checkbox"/> Line 2:	Description

3.7 Rock Solid

Below the image shows the appearance of the "Rock Solid" style.



You can set the hover color to highlight the selected image on the navigation bar by below setting.



The navigation section provides a designated area to display additional image information. It is divided into small sections. Below the image shows the layout of the various small sections.

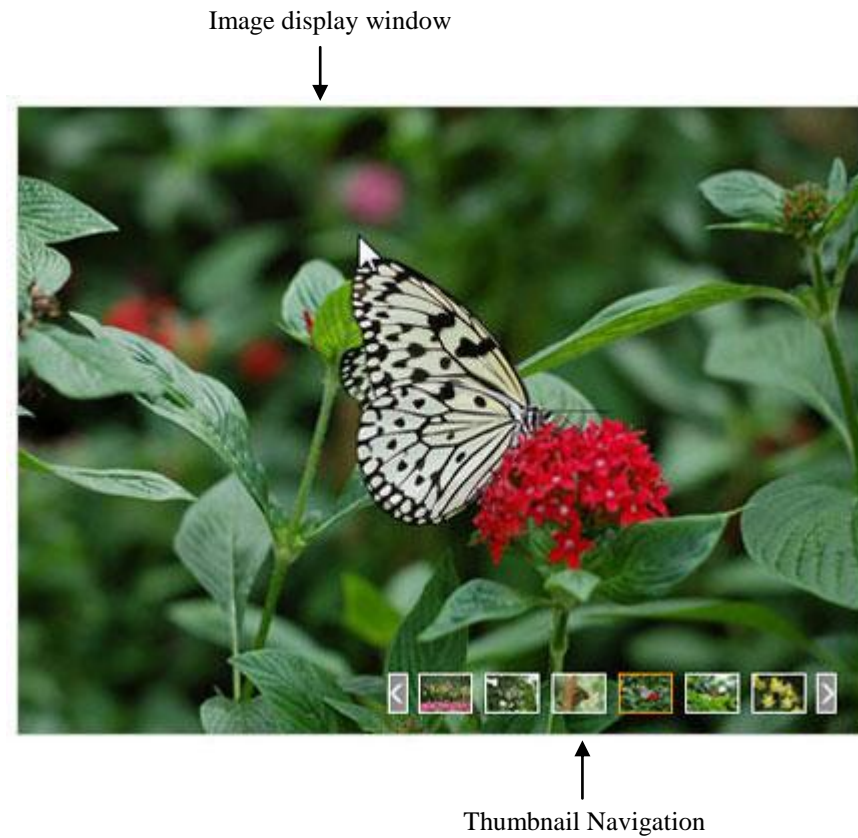


Each section can be mapped to an image property/column through below setting options.



3.8 Thumbnail

Below the image shows the appearance of the "Thumbnail" style.

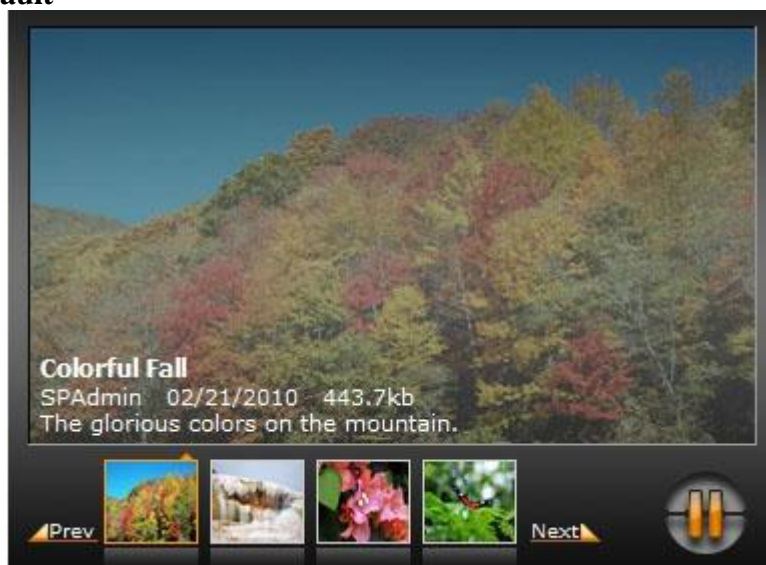


The "Thumbnail" style provides a simple way to display and navigate images. There is no additional option available to display image information.

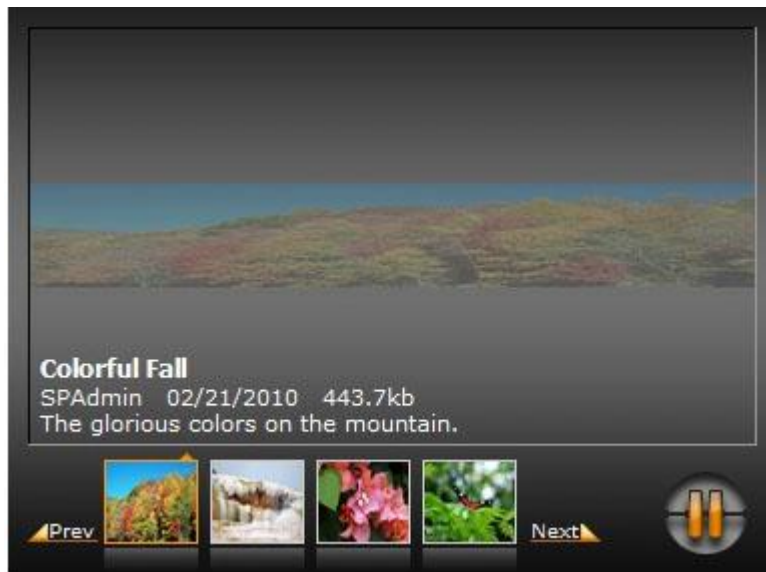
4. Transition Effects Guide

FireArrow Photo Viewer image providing the following transition effects (Transition effect with * is for IE browser only)

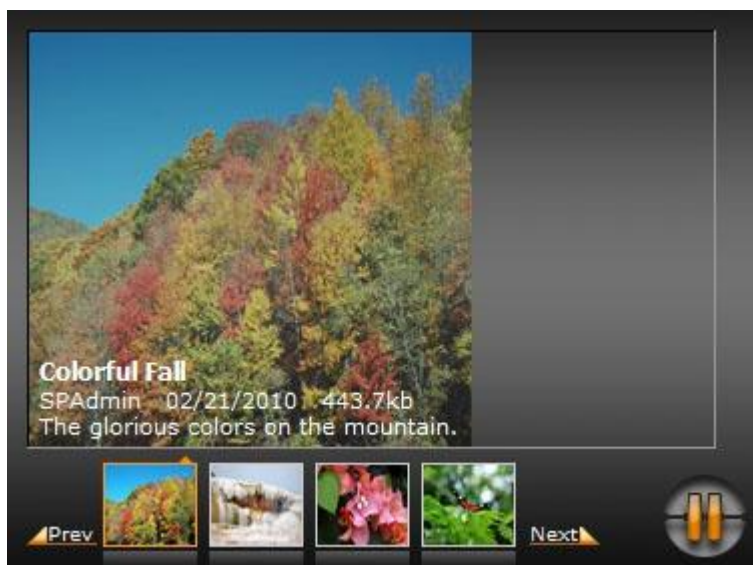
4.1 Default



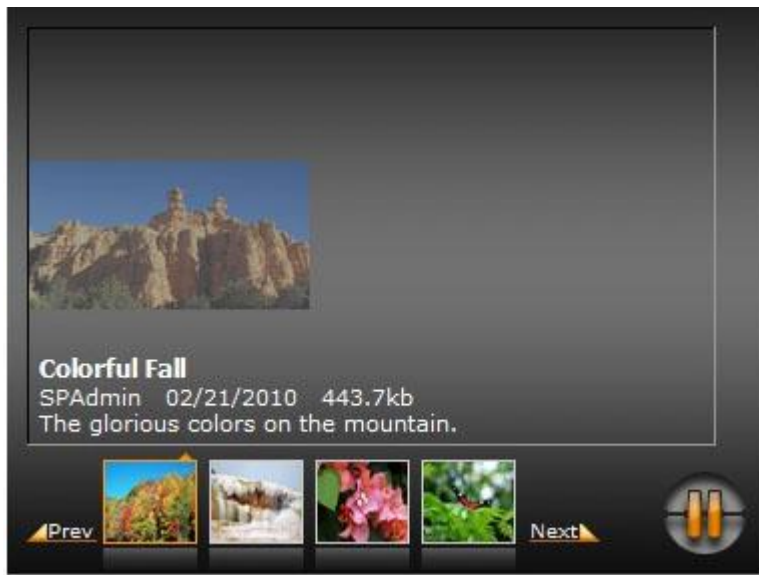
4.2 Dropdown



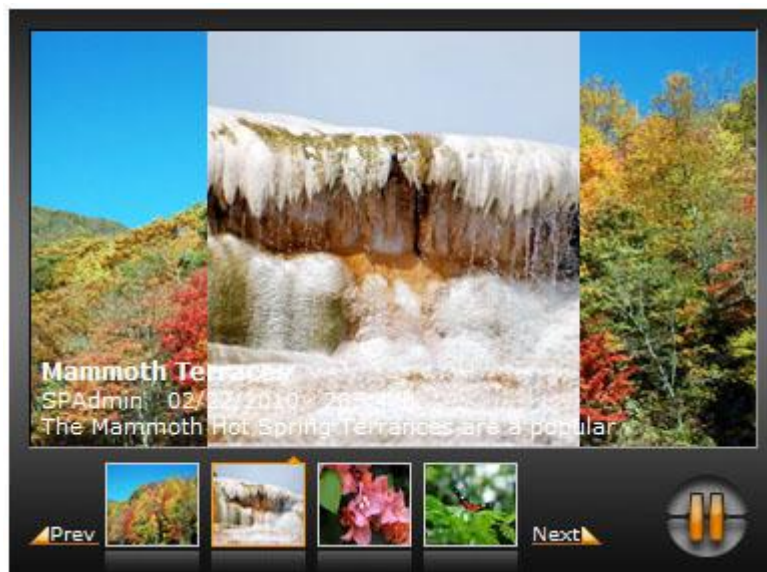
4.3 WipeRight



4.4 BlindZ



4.5 Barn*



4.6 Blinds*



4.7 CheckerBoard*



4.8 Fade*



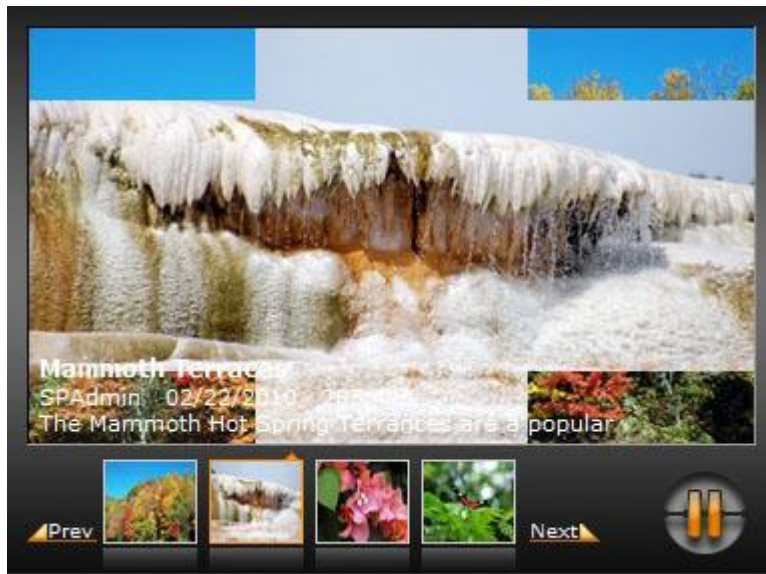
4.9 GradientWipe*



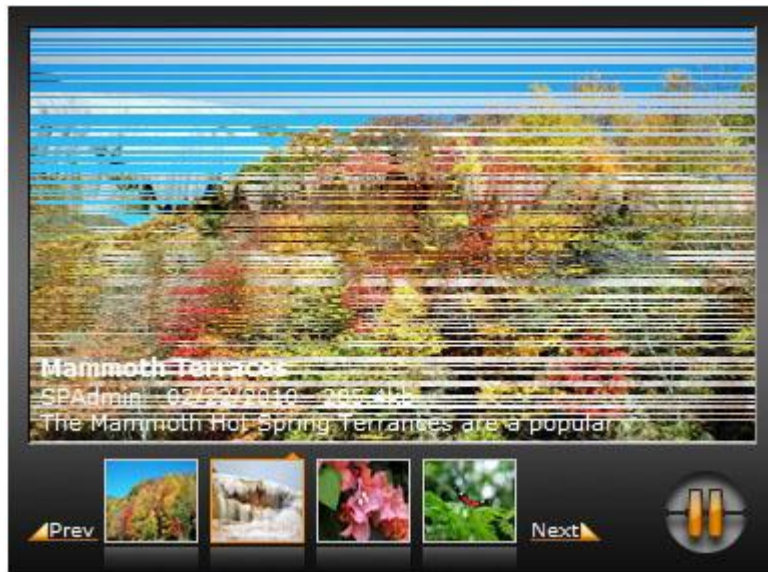
4.10 Insert*



4.11 Iris*



4.14 RandomBars*



4.15 RandomDissolve*



4.16 Slide*



4.17 Spiral*



4.18 Stretch*



4.19 Wtrips*



4.20 Wheel*



4.21 Zigzag*



Chapter 4: Technical Support

Please feel free to contact our technical support team if you have any question or encounter any technical difficulty.

Technical Support: support@firearrowsoft.com

Please visit our web site (<http://www.firearrowsoft.com>) for any product update and answers to frequently asked questions.